

SLOVAK CHAMBER OF COMMERCE AND INDUSTRY ŽILINA

SLOVAKIA



SLOVAK CHAMBER OF COMMERCE AND INDUSTRY ŽILINA

SLOVAK REPUBLIC - HEART OF EUROPE

Basic information:

Establishment: 1 January 1993

Official name: Slovak Republic

Area (m²): 49,035

Population: 5,400,000

Capital: Bratislava

Official currency: Euro

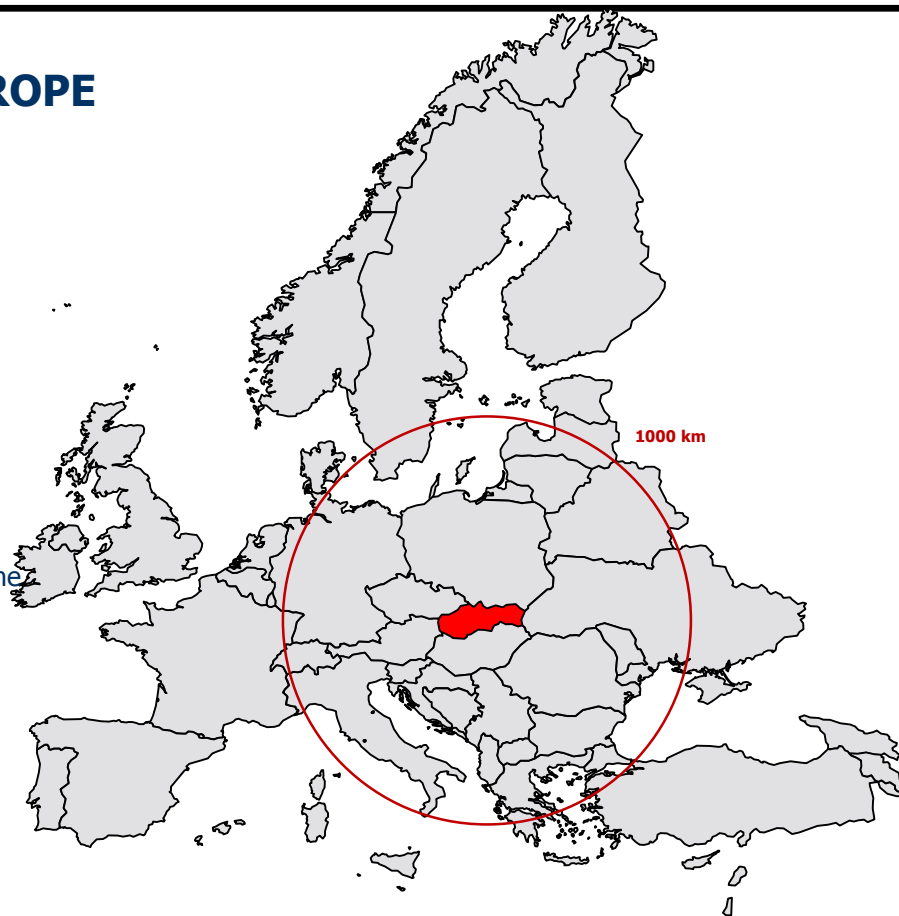
Official language: Slovak

Political system: parliamentary democracy

Election term: 4 years

Neighbours: Austria, Czech Republic, Hungary, Poland, Ukraine

Time zone: GMT+1 hour



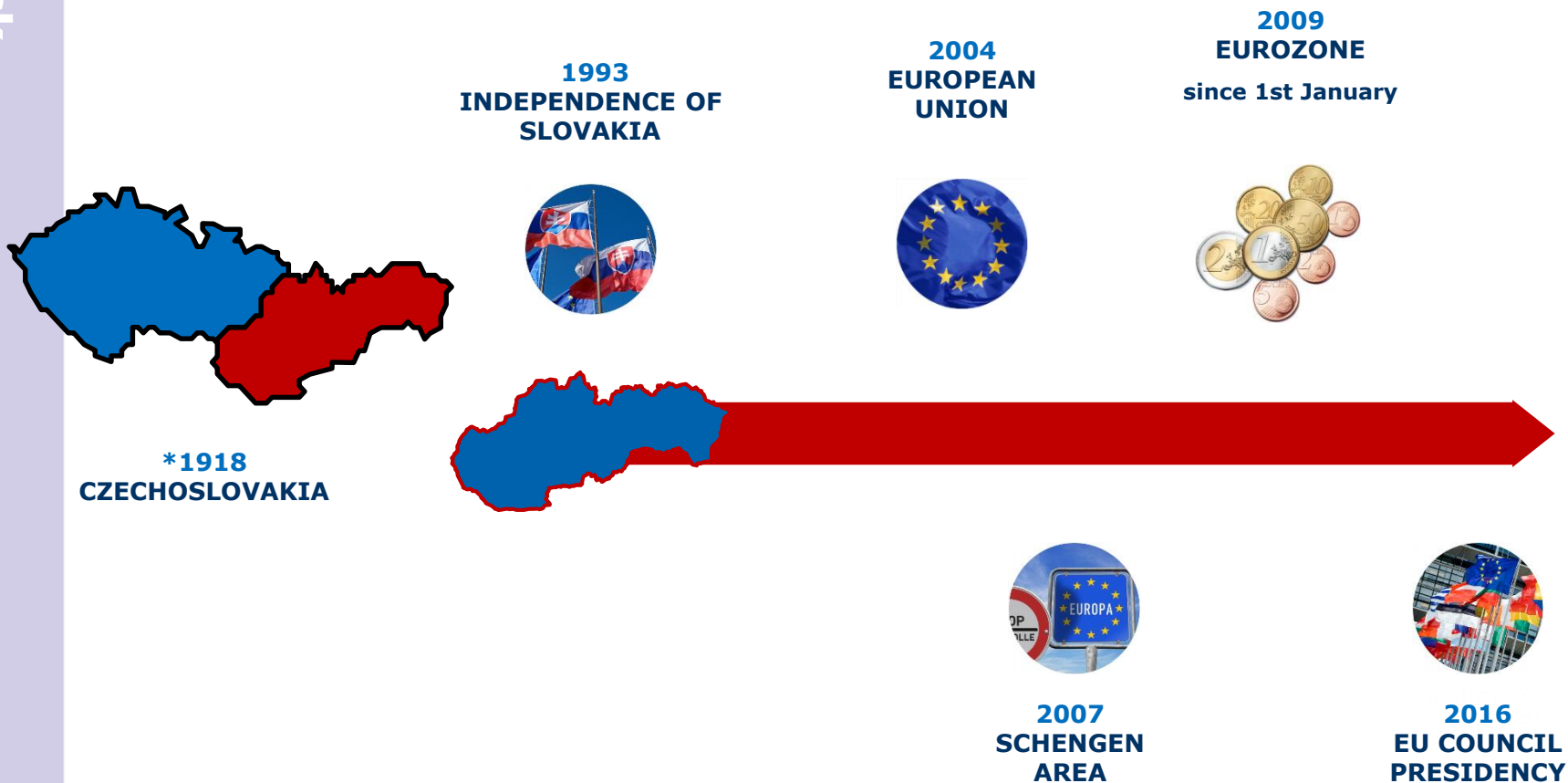
300 MILLION
CLIENTS IS
LOCATED IN
RADIUS OF
1,000 KM

600 MILLION
CLIENTS IN
RADIUS OF
2,000 KM

SLOVAK CHAMBER OF COMMERCE AND INDUSTRY ŽILINA

ECONOMICALLY INTEGRATED IN EU

History time sequence:



SLOVAK CHAMBER OF COMMERCE AND INDUSTRY ŽILINA

STRUCTURE OF ECONOMY



AGRICULTURE 4,4%



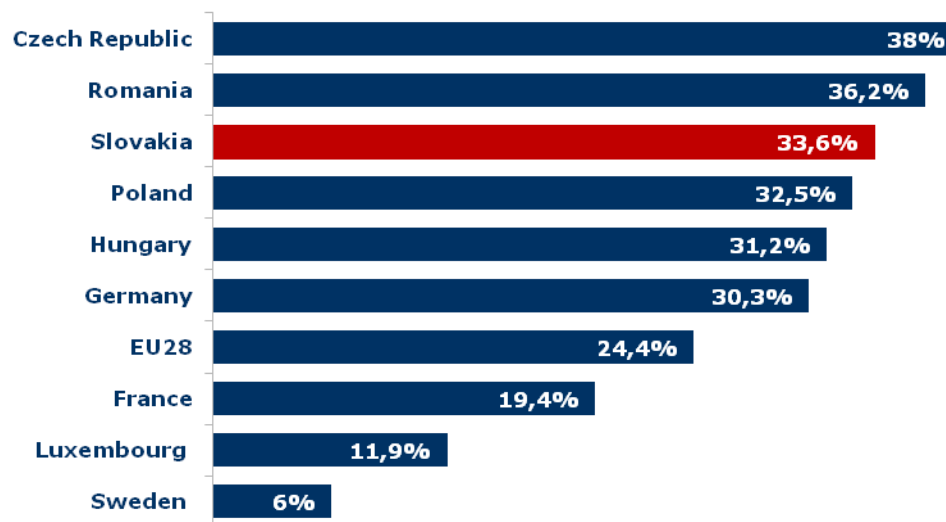
INDUSTRY 33,6%



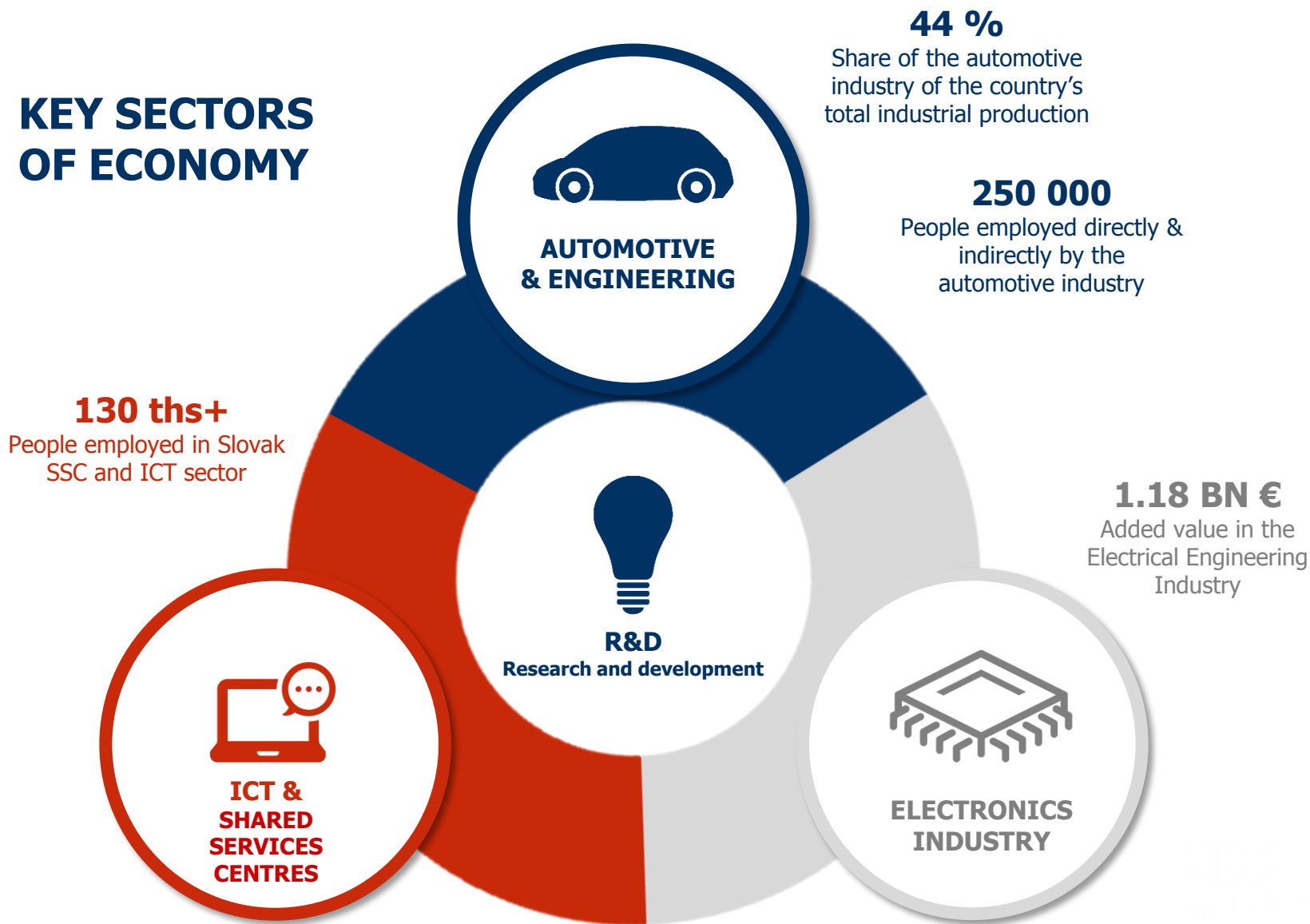
SERVICES 62%

SLOVAKIA

rank among the
most industrial
countries
in the EU



KEY SECTORS OF ECONOMY



44 %

Share of the automotive industry of the country's total industrial production

250 000

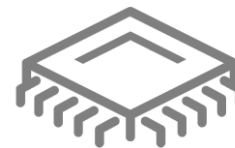
People employed directly & indirectly by the automotive industry



AUTOMOTIVE & ENGINEERING



R&D
Research and development



ELECTRONICS INDUSTRY

1.18 BN €

Added value in the Electrical Engineering Industry

130 ths+

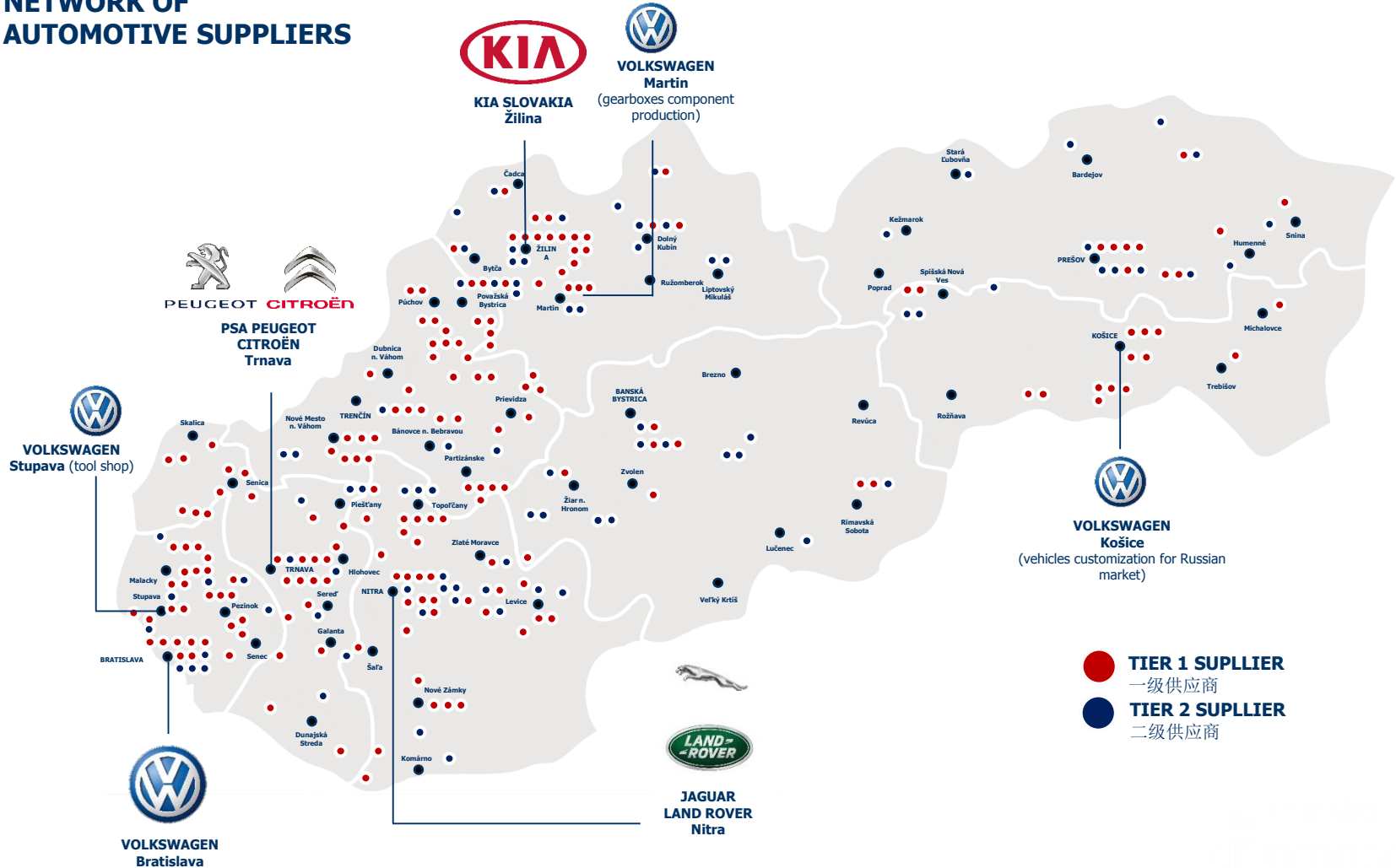
People employed in Slovak SSC and ICT sector



ICT & SHARED SERVICES CENTRES

SLOVAK CHAMBER OF COMMERCE AND INDUSTRY ŽILINA

NETWORK OF AUTOMOTIVE SUPPLIERS



SLOVAK CHAMBER OF COMMERCE AND INDUSTRY ŽILINA

SUCCESS STORIES IN AUTOMOTIVE RESEARCH & DEVELOPMENT

Johnson Controls
Trenčín



Seat Systems

ZKW Slovakia
Krušovce



Lighting Systems

Continental Automotive
Zvolen



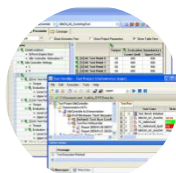
Brake Calipers

LEONI
Trenčín



Cable Systems

Siemens
Žilina



Transport Automation

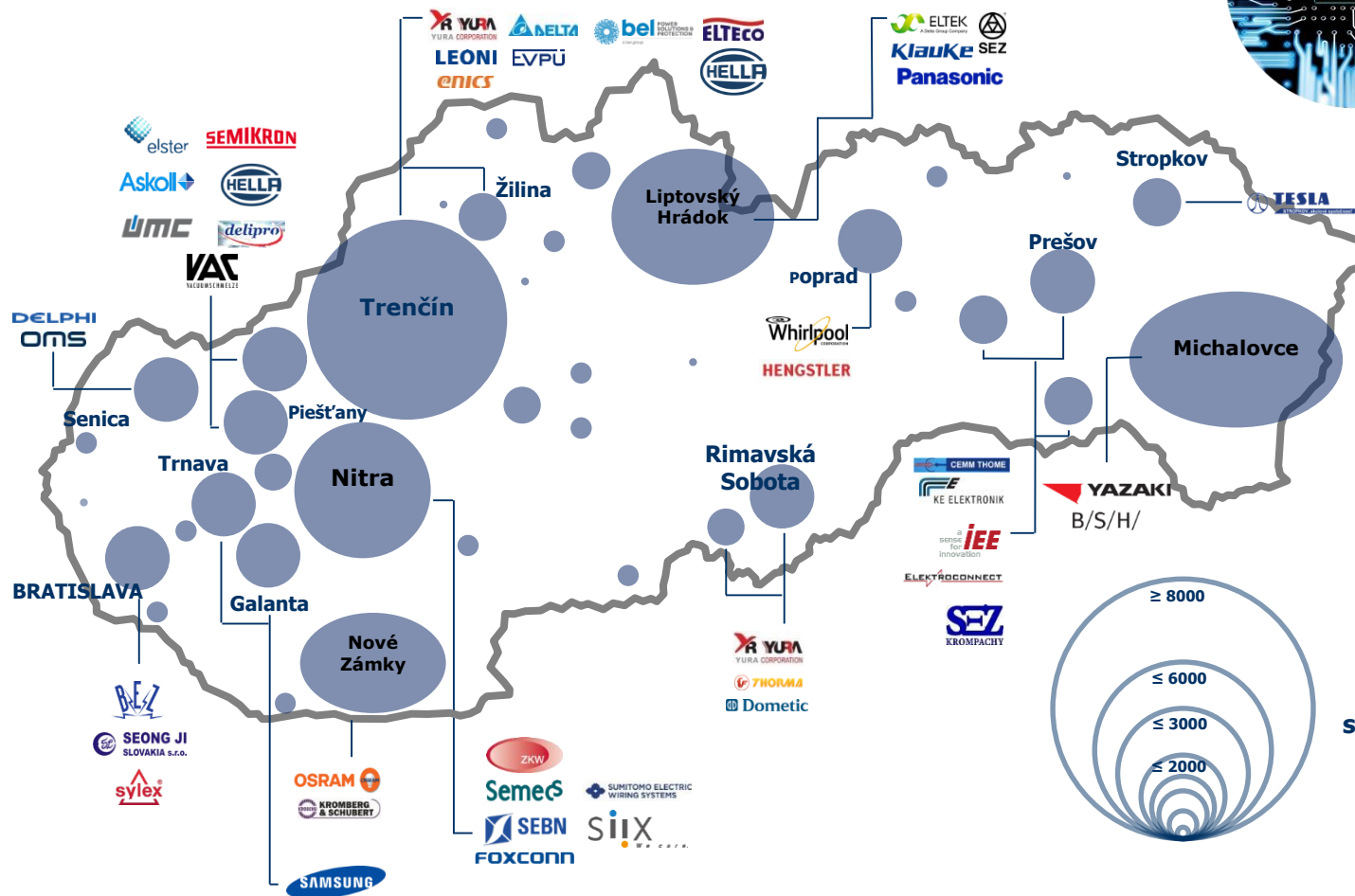
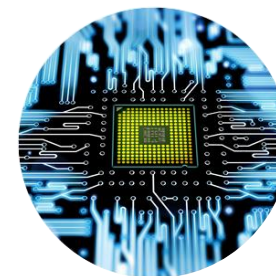
CEIT
Bratislava



Complex Research Projects

SLOVAK CHAMBER OF COMMERCE AND INDUSTRY ŽILINA

ELECTRONICS INDUSTRY - MAJOR HUBS

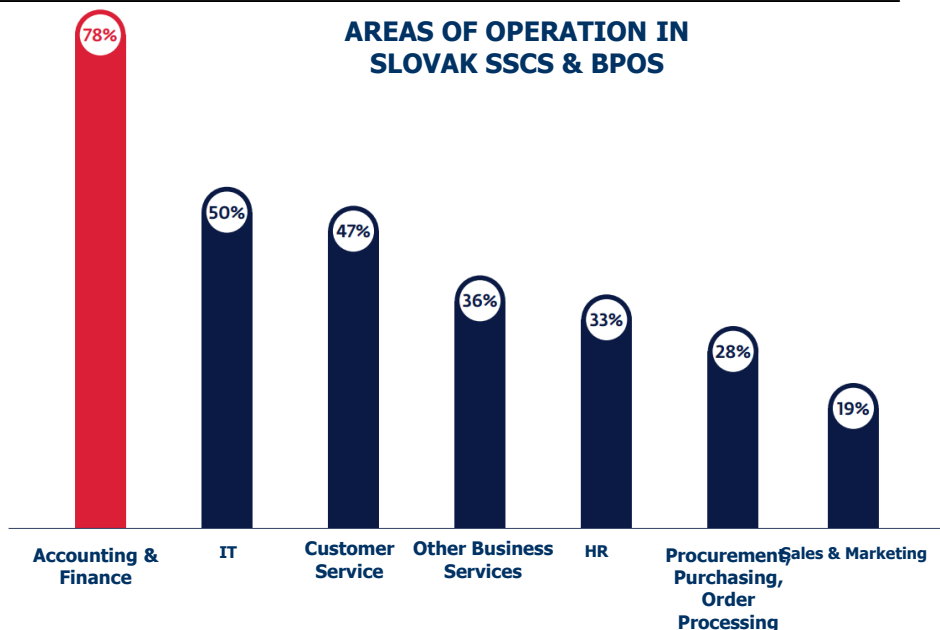


Electronics Industry hub size defined by number of employees

SLOVAK CHAMBER OF COMMERCE AND INDUSTRY ŽILINA

SHARED SERVICES CENTRES

- over the last 10 years, Slovakia has developed a leading reputation for quality & high value services
- more than 40 Shared Services Centers (SSCs) and Business Process Outsourcing Centers (BPOs) are established in Slovakia providing multifunctional scope of operations



Source: SARIO, Grafton Recruitment Slovakia (2016)

40+
SSCs & BPOs already
established
in Slovakia



SLOVAK CHAMBER OF COMMERCE AND INDUSTRY ŽILINA

SSCs & BPOs IN SLOVAKIA - TOP COMPANIES

COMPANIES WITH MORE THAN 700 EMPLOYEES



USA | 2003 | Bratislava



USA | 1999 | Bratislava, Košice



Germany | 2006 | Košice



United States | 2002 | Bratislava



US | 2004 | Bratislava



US | 2007 | Bratislava



Germany | 2007 | Bratislava



Germany | 1993 | Bratislava, Žilina, Košice

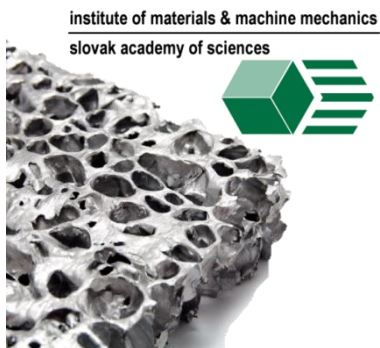


Switzerland | 2007 | Bratislava

SLOVAK CHAMBER OF COMMERCE AND INDUSTRY ŽILINA

SLOVAK SUCCESS STORIES - WELL KNOWN IN THE WORLD

Great ideas from Slovakia went global earning success in IT, automotive and machinery sectors with unique innovation potential



Robotic Gearboxes



Carbon Materials



SLOVAK CHAMBER OF COMMERCE AND INDUSTRY ŽILINA

ŽILINA REGION



SLOVAK CHAMBER OF COMMERCE AND INDUSTRY ŽILINA

General information

Area	6.808 km ²
Population	690.420
Density	101 inh./km ²
Regional seat	Žilina city
Number of districts	11
Borders	<ul style="list-style-type: none"> • Czech Republic (north-west) • Poland (north, north-east) • Prešov region (east) • Banská Bystrica region (south) • Trenčín region (south-west)

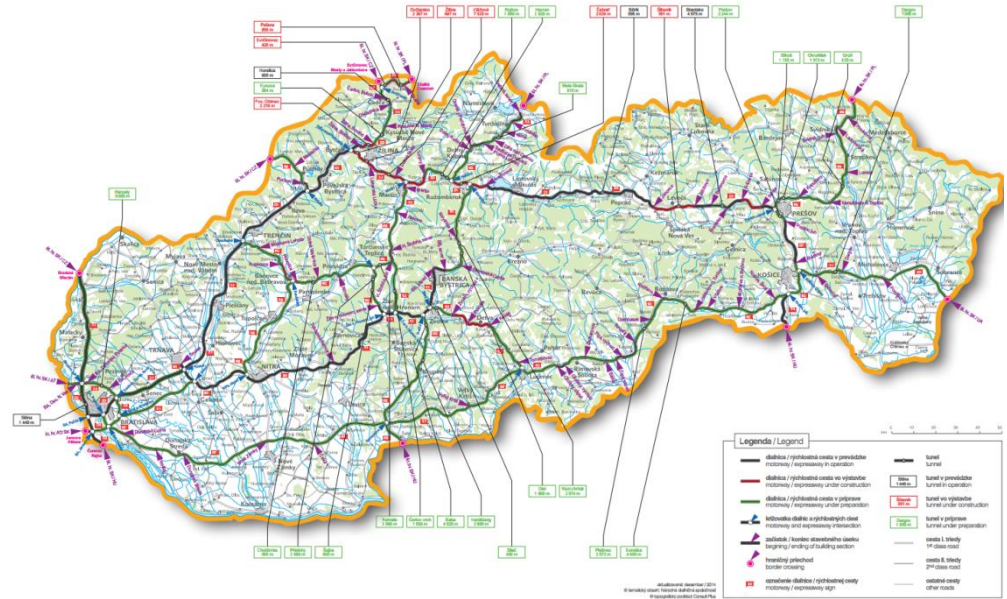
Economic overview

GDP per capita	12 079 €
Unemployment	6,92 %
Average salary	918 EUR
No. of registered job seekers	23 809



SLOVAK CHAMBER OF COMMERCE AND INDUSTRY ŽILINA

INFRASTRUCTURE



IMPORTANT EUROPEAN CROSSROAD

- **D1 and D3 highways included in TEN-T**
- **international airport Žilina**
- **international railway node**
- **intermodal transport terminal**

SLOVAK CHAMBER OF COMMERCE AND INDUSTRY ŽILINA

FUNDAMENTAL INDUSTRIAL BRANCHES OF THE REGION

Electricity, gas, steam, hot water production

Cellulose, paper and papery products production

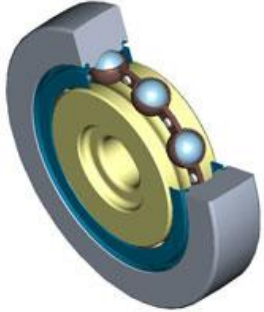
Machine, mechanism and car production

Electric and optic equipment production

Food and beverage production

Metal production

Pharmaceutical production



SLOVAK CHAMBER OF COMMERCE AND INDUSTRY ŽILINA

SCCI Žilina Regional Chamber - location



SLOVAK CHAMBER OF COMMERCE AND INDUSTRY ŽILINA

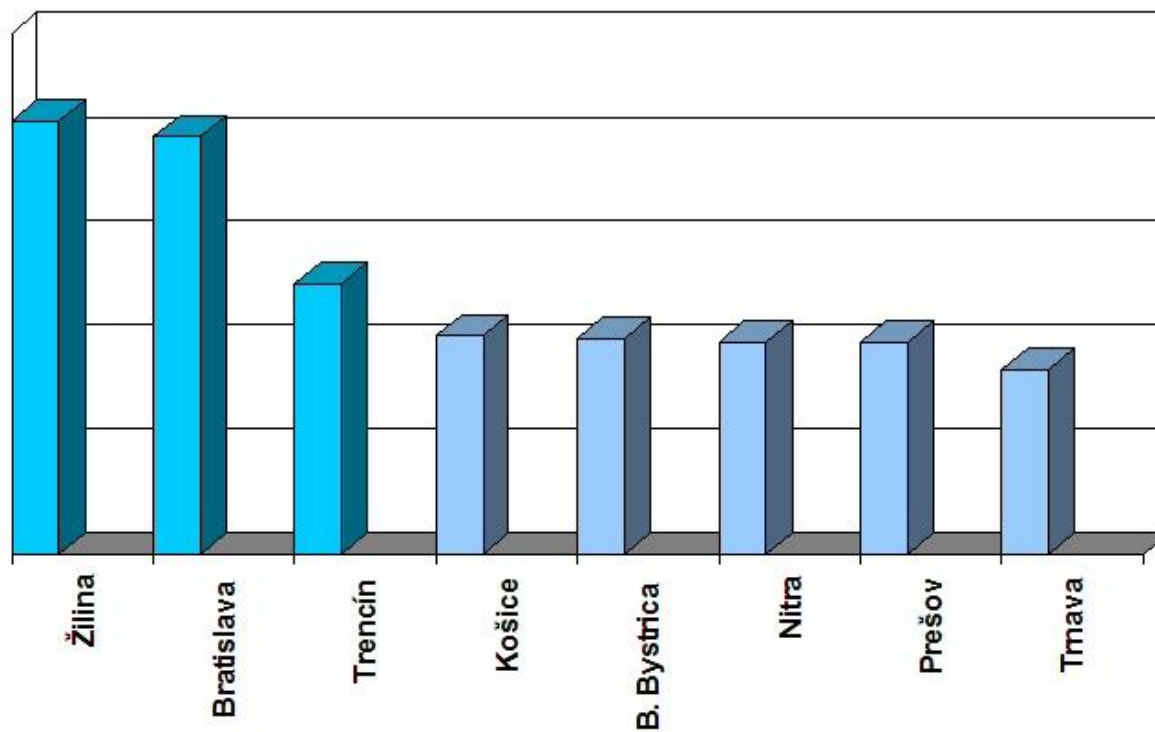
SLOVAK CHAMBER OF COMMERCE AND IDUSTRY – REGIONAL CHAMBERS

- Slovak Chamber of Commerce and Industry, **Bratislava**
established on March 25th, 1850
- Slovak Chamber of Commerce and Industry, **Košice**
established on Novemver 14th, 1850
- Slovak Chamber of Commerce and Industry, **Banská Bystrica**
established on July 1 st, 1992
- Slovak Chamber of Commerce and Industry, **Nitra**
established on July 1 st, 1992
- Slovak Chamber of Commerce and Industry, **Žilina**
established on July 1 st, 1992
- Slovak Chamber of Commerce and Industry, **Trenčín**
established on July 1 st, 1992
- Slovak Chamber of Commerce and Industry, **Prešov**
- Slovak Chamber of Commerce and Industry, **Trnava**



SLOVAK CHAMBER OF COMMERCE AND INDUSTRY ŽILINA

Chambres order according to number of members



SLOVAK CHAMBER OF COMMERCE AND INDUSTRY ŽILINA

OUR SERVICES

- ✓ Regional Chamber of Commerce and Industry Žilina cover the following subregions of Zilina region: **Považie, Turiec, Kysuce, Liptov and Orava.**
- ✓ Issuance of **ATA CARNET** documents for companies which handle with their goods to out of European union.
- ✓ Arrangement of **trainings, conferences, business meetings, workshops**, etc.
- ✓ Arrangement of **foreign business misions** and B2B negotiations.
- ✓ Participantion on **transborder projects**.
- ✓ Full service for our members and investors, etc.

SLOVAK CHAMBER OF COMMERCE AND INDUSTRY ŽILINA

INTERNATIONAL PROGRAMMES

Cross-border cooperation



- Visegrad Fund



Project: “Internationalization of V4 Start-ups”
23rd January 2018, Žilina, Slovak Regional Meeting





RESEARCH CENTRE
UNIVERSITY OF ŽILINA



Research Centre of the University of Žilina ...research for people

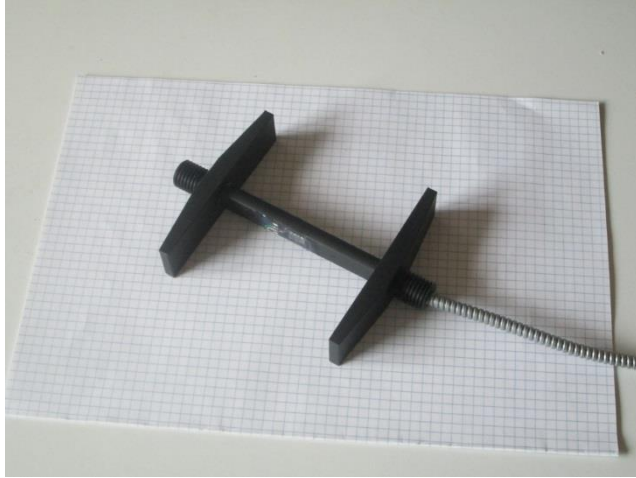
Research areas

- Monitoring and evaluation of the transport infrastructure conditions
- Progressive materials for transport infrastructure and vehicles production
- Design and operation of smart (intelligent) buildings and renewable energy sources



Research centre of the University of Žilina

...research for people



Project Cooperation:

with TNTech Ltd. Company - development of the **sensors for concrete and asphalt deformations measurements**, utility models No. 93-2014 a 94-2014



Research centre of the University of Žilina ...research for people

Research centre - Incubator - services:

- Search for potential start-up ideas
- Support for the emergence of university start-ups and spin-offs
- Consulting for start-up companies
- Assistance in obtaining startup capital



www.vyskumnecentrum.sk



Vehicle without driver

INNOVATION FOR INDUSTRY 4.0



DEVELOP MODERN TECHNOLOGIES

Part of innovative solutions:

- **Smart mobile robots, automated production lines, virtual training systems, CEIT Table, CERAA application**

FACTS ABOUT CEIT

We specialise in technical, process and product innovation

We focus on the automotive, engineering, electronics and consumer products industries

Our customers include leading industrial companies in Slovakia and abroad

We help our partners increase their productivity

We are pioneers in the field of Digital Factory

We transfer our own research and development into practice

We authored and own dozens of patents, trademarks, utility models and designs

We are a member of the Asseco group since September 2017

INNOVATION FOR INDUSTRY 4.0



CEIT offer solutions for:

- **SMART FACTORY**
- **DIGITAL FACTORY**
- **AUTOMATION OF INTERNAL LOGISTICS**
- **ROBOTISATION**
- **PRODUKT INNOVATION**
- **3D PRINTING**
- **OPTIMISATION OF PRODUCTION AND LOGISTICS**

LIFEBUTTON

The security element of the new generation for cars



„A system alerting the driver to a sudden driver's health problem“

Basic goal is to reduce the number of deaths due to late first aid.

The system alerts another peoples to the serious health problem in which the crew of car is located.

The driver spends behind the wheel, on average, more than 30 days per year

Health risks such as hypoglycemia, heart attack, stroke, anaphylactic shock

Enhancing security and safeguarding of human life

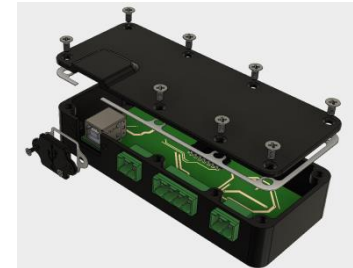


One push of a large button alerts the surroundings that there is a person in the car who needs help.

www.lifebutton.eu

+421 903 505 557

lifebutton@lifebutton.eu



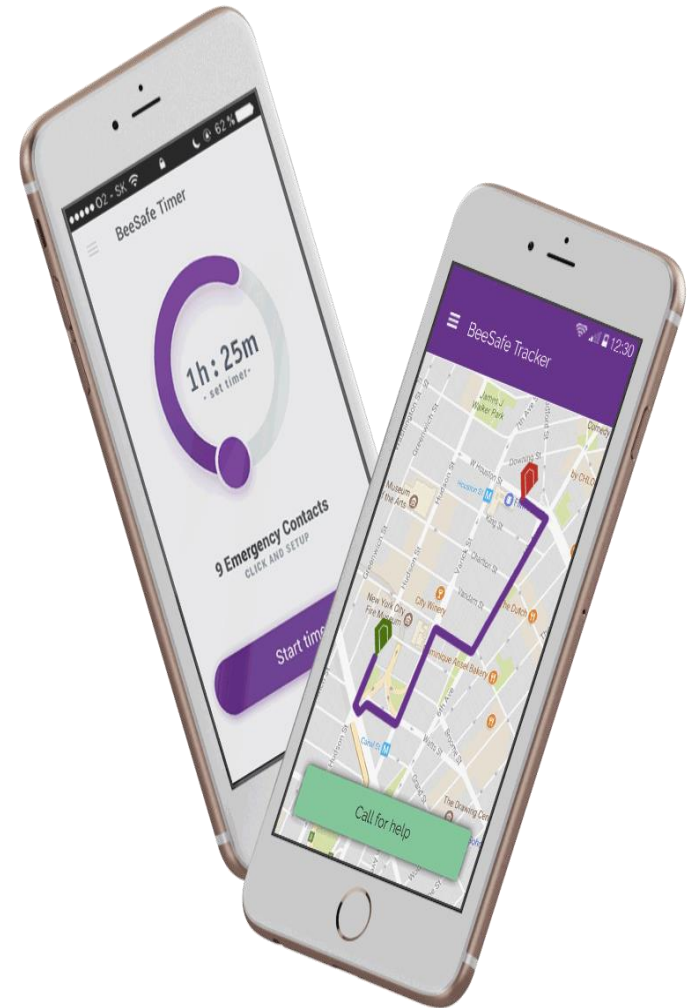
SMART SAFETY SOLUTION

Security app for smart phones Incident prevention in digital age

BeeSafe is an intelligent solution that **takes care of people's security** with the **use of modern technology (smartphone)**.

Miroslava Janišová
+421 948 220 309
contact@beesafe.me

www.beesafe.me





JOIN US
HELLO@JELLYBO.COM

THE **BIGGEST** MICRO ANIMATIONS AND INTERACTIONS
MARKETPLACE FOR WEB DEVELOPERS AND DESIGNERS.

In the world is create 250 million websites per year which is a huge cost of graphic work

Goals of start-up:

- ✓ Reduce the cost of programming animations
- ✓ Creating a platform where visitors can buy individual graphic data
- ✓ Save costs and many hours of work
- ✓ Create biggest micro-animations and interactions marketplase for web developers and designers

Jellybo was created as a reaction to a non-existent database of beautiful and functional web microanimations.

*We want to save your time and shorten the lengthy process of making a few clicks.
You no longer have to create animations, just search them in our marketplace.*

hello@yellybo.com

www.jellybo.com

SLOVAK CHAMBER OF COMMERCE AND INDUSTRY ŽILINA

Thank you for your attention

Róbert Vydra

Slovak Chamber of Commerce and Industry Žilina
Háľkova 31, ŽILINA, Slovakia

T: +421-41-7235 102

M: +421-949 727 801

E: zahrza@za.scci.sk

www.sopk.sk

www.interbiznis.sk

www.viator.sk