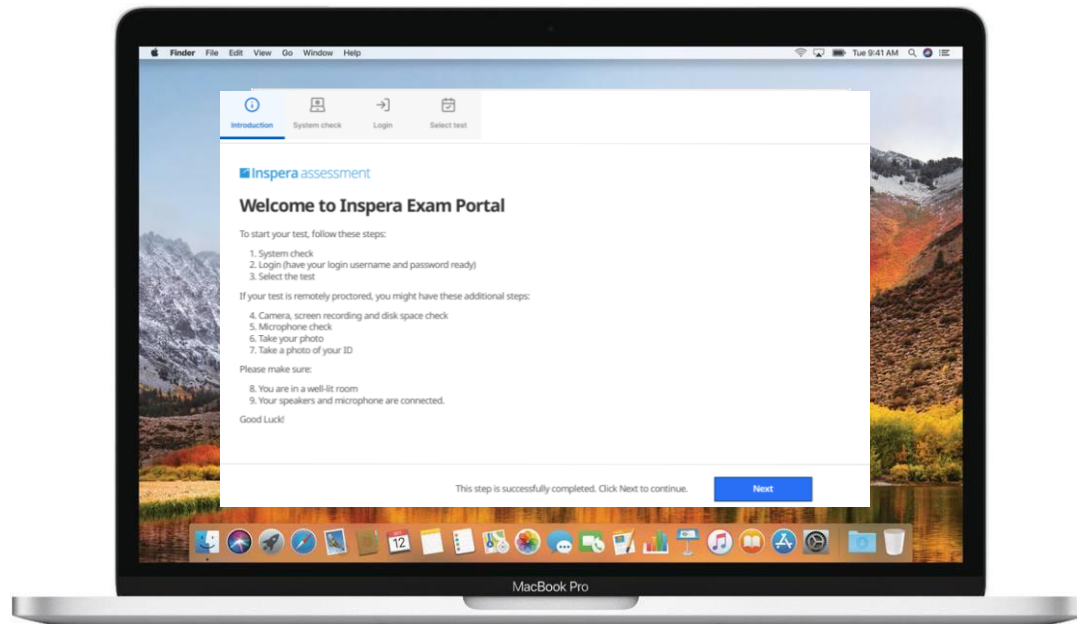


Manual for students

Apple Mac





Index



Minimum System Requirements

Uninstalling the outdated version of Inspera Exam Portal application

Install the Inspera Integrity Browser application

Start Inspera Integrity Browser

System check

Log into the exam

Take the exam

Quit the application

Incorrect quitting the application

Check the exam grade

Contact the Electronic Examination Center

System requirements



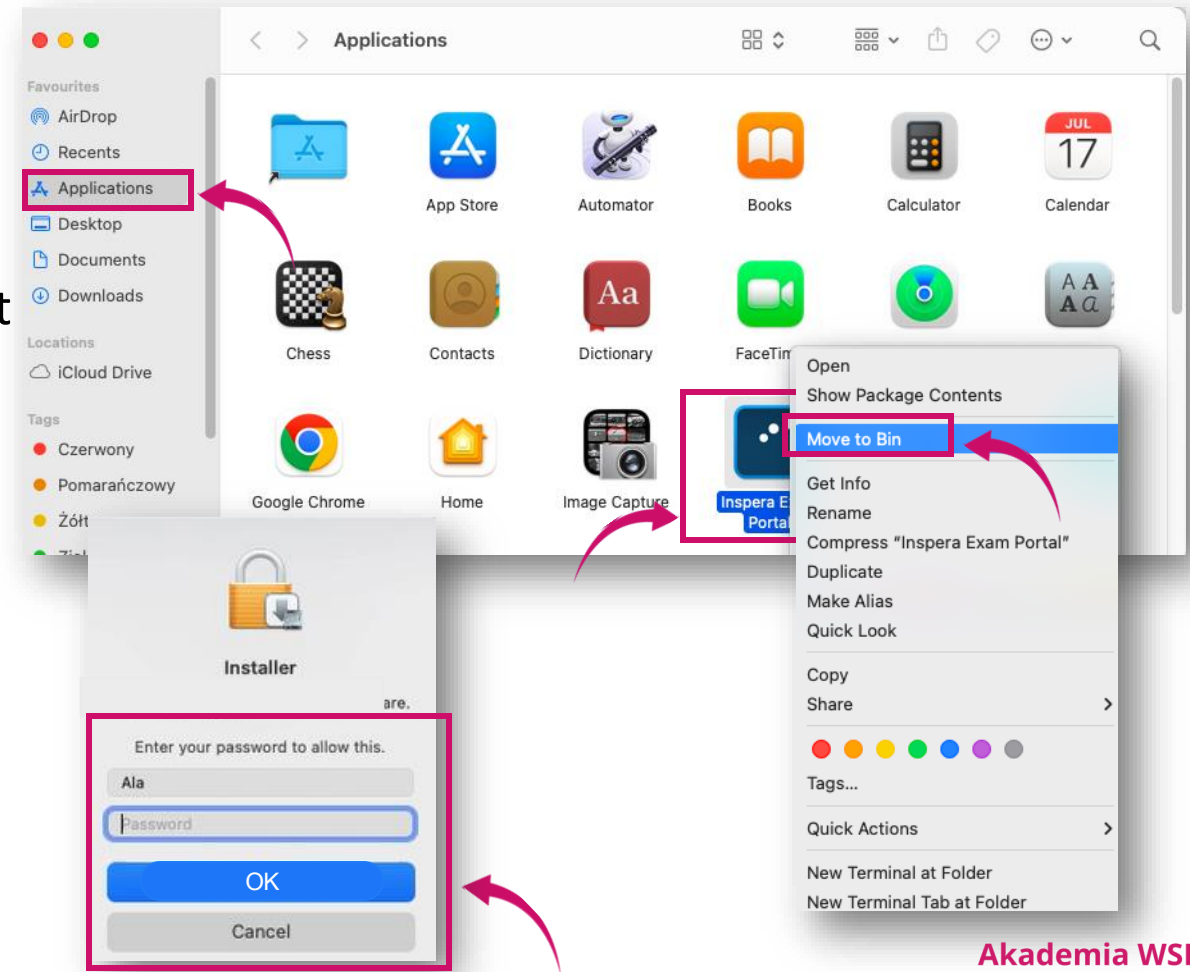
MacOS: OS X 10.15 or newer

- ❖ **Processor:** newer than 2011 [Intel Sandy Bridge (Core i3, i5 i i7) or newer]
- ❖ **Free storage space:** 500 MB
- ❖ **Graphics driver:** OpenGL 2.0
- ❖ **Minimum SSE 4.2 in AMD processors and CPU**
- ❖ **Internet connection:** a broadband, 0,15 Mb/s upload speed

Uninstalling the Inspera Integrity Browser application- only if you have an outdated version of the application



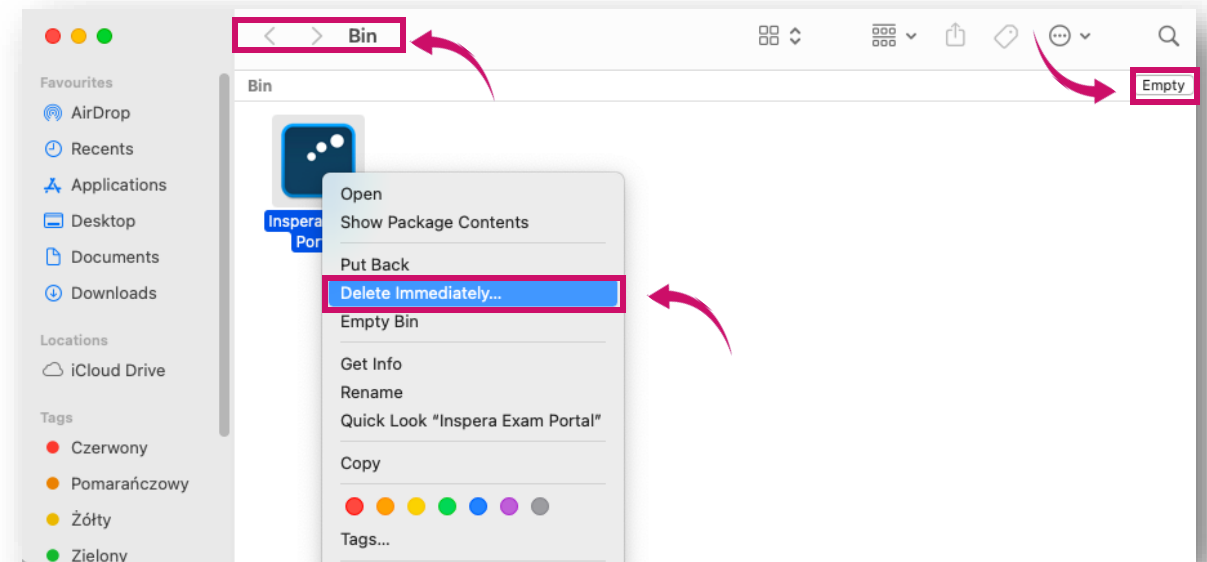
- ❖ The current supported version of the application is **1.16.3**. If you have an older version of the application, please uninstall it. To do this, go to the upper menu and select **Go** and then **Applications**.
- ❖ In the applications folder find **Inspera Exam Portal** and click on the right mouse button.
- ❖ Then select **Move to Bin**.
- ❖ The system asks you for the administrator password. Next click on **OK**.



Uninstalling the Inspera Exam Portal application - only if you have an outdated version of the application



- ❖ It is necessary to remove the outdated version of the application fully before installing the newest one.
- ❖ Go to the Bin select and click on IEP icon. Choose **Delete Immediately**.
- ❖ You can also use the **Empty** button in the right upper corner.



Install the Inspera Integrity Browser application



The first step of the installation process is to download the latest/newest version of ***Inspera Integrity Browser*** installer.

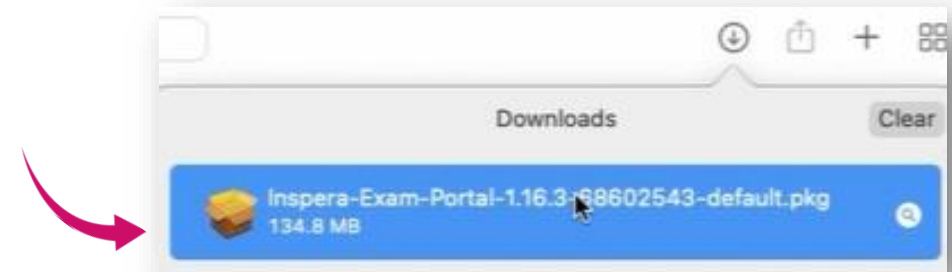
To install the Inspera Integrity Browser application, **you need to have the administrator rights** on your computer.

The newest installation link:

 **Mac -** <http://awsb.inspera.com/get-iep>

Install the Inspera Integrity Browser application

- ❖ The file is downloaded onto your computer.
- ❖ Click on the downloaded file.

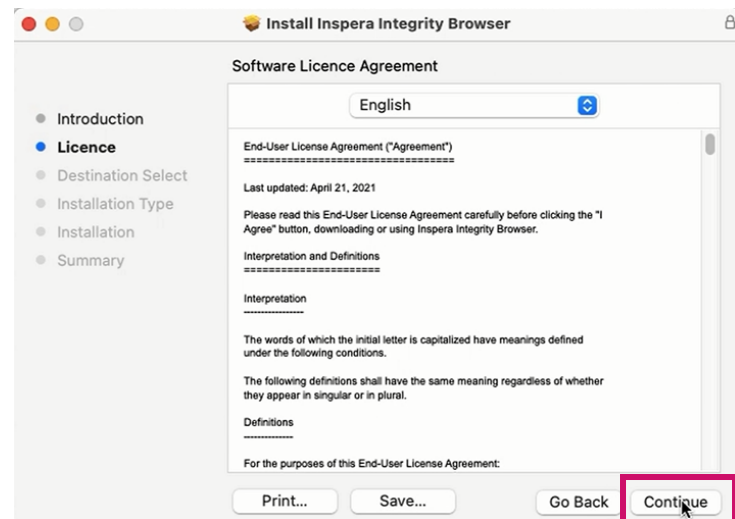
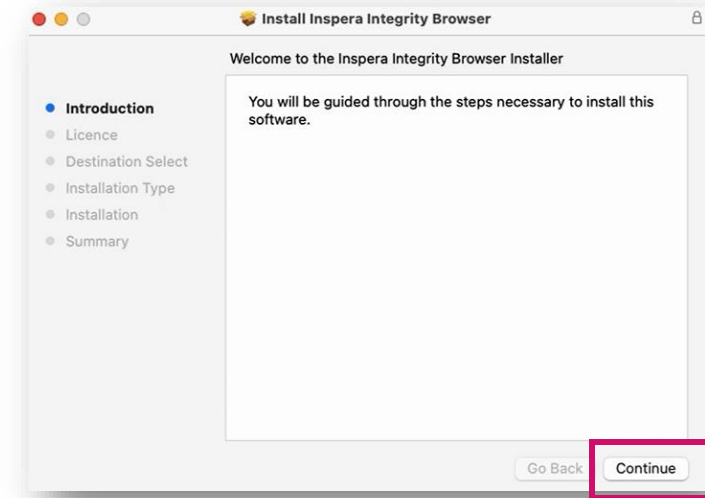


- ❖ If the IIB directory does not open, go to **Finder** and select **Downloads**. Then click on **1.16.3-68602543-default.pkg**.

Install the Inspera Integrity Browser application

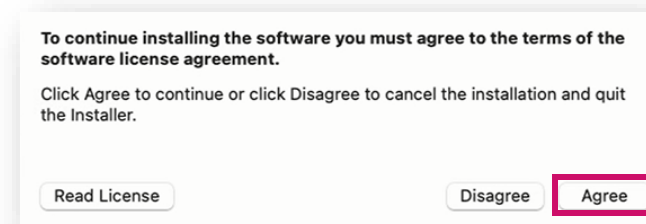


❖ The installer window opens, click on **Continue**.



❖ A window with the license terms opens, click on **Continue**.

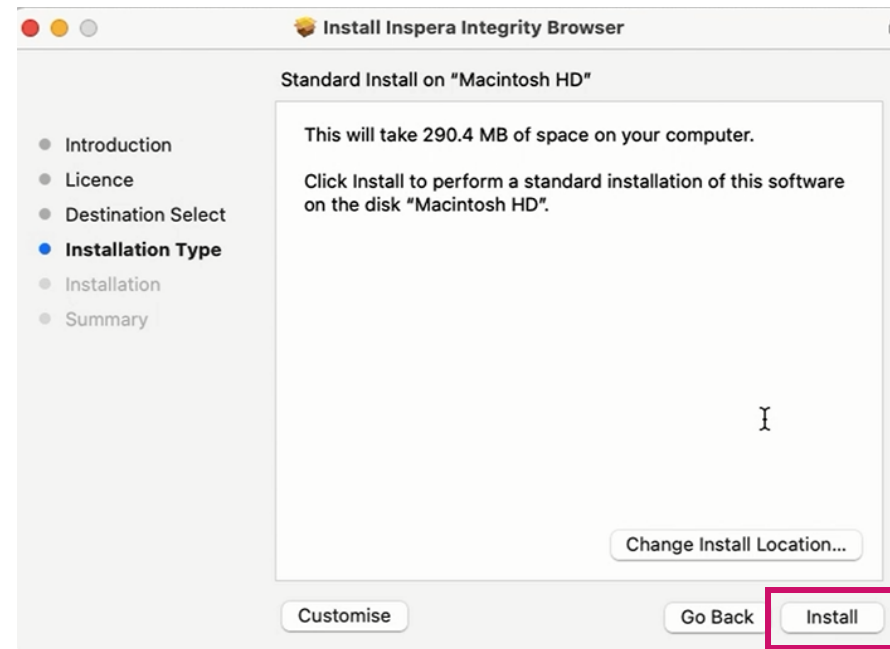
❖ Click on **Agree** button.



Install the Inspera Integrity Browser application



❖ Then click on **Install**.

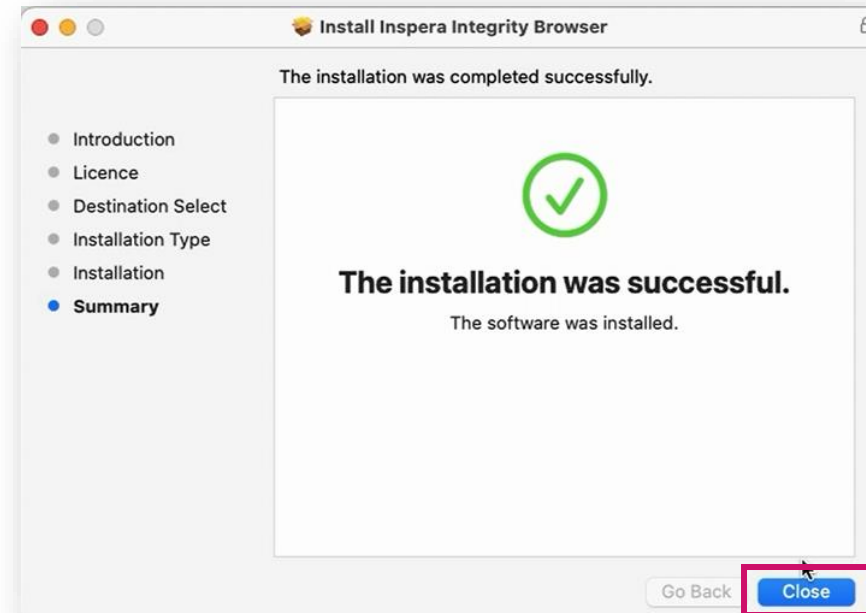


❖ You must confirm the proces as the administrator. Then click on **Install Software**.

Install the Inspera Integrity Browser application

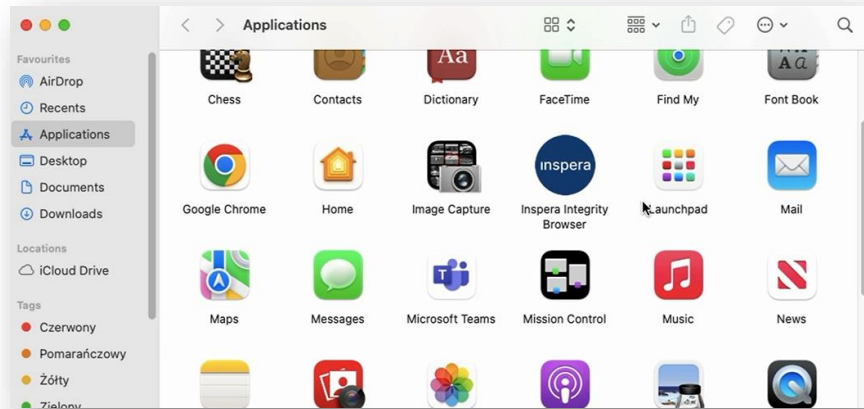


❖ After a successful installation, click on **Close**.



❖ In the next step the system asks you to move the installer package to the bin. Confirm this by clicking on **Move to Bin**.

Start Inspera Integrity Browser



❖ Make sure that IIB is in the right place-it should be in Applications catalog.

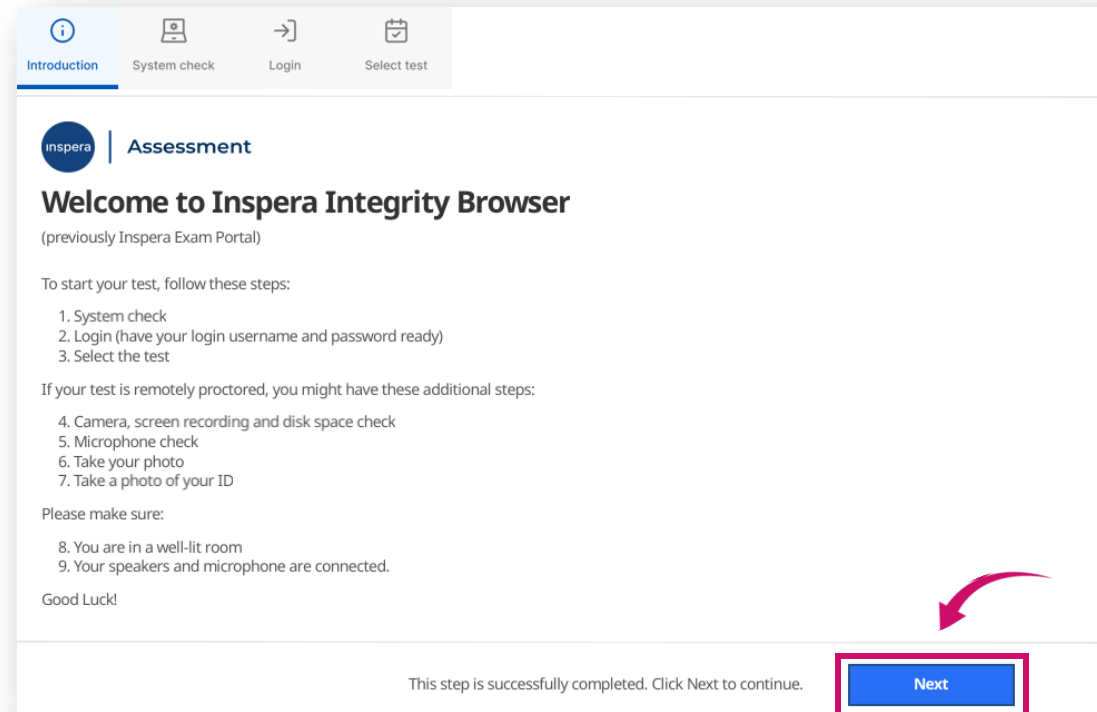
❖ To launch Inspera Integrity Browser, go to **Launchpad** and click on the **application icon**.



Welcome screen



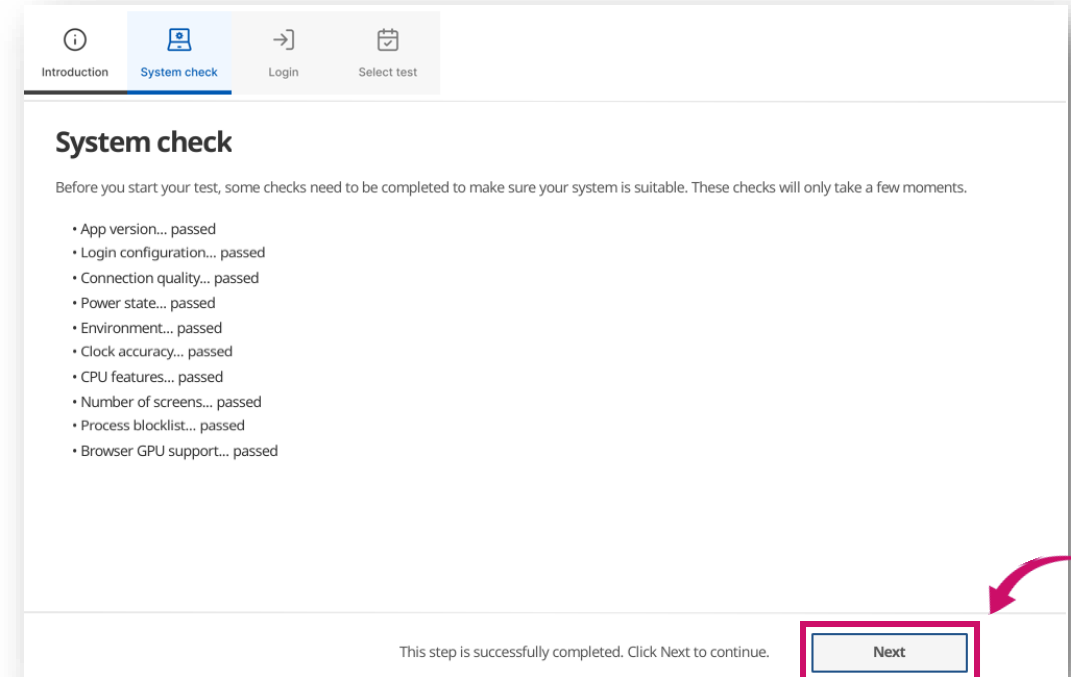
- ❖ In the next window you can see a welcome screen which informs you that the initial system tests should be performed.
- ❖ Click on **Next**.



System check



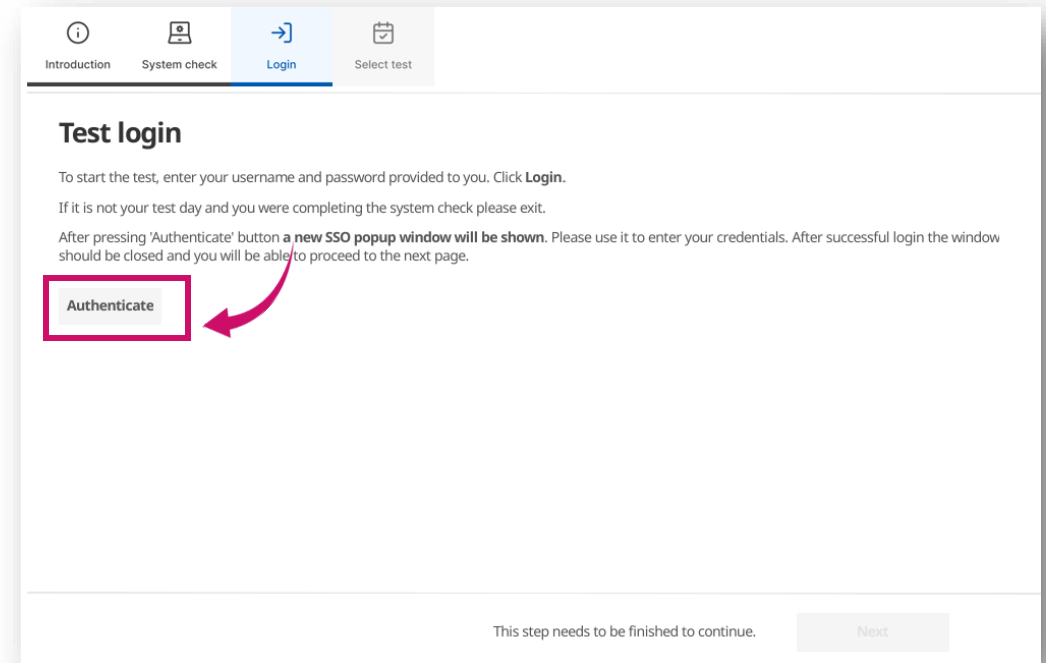
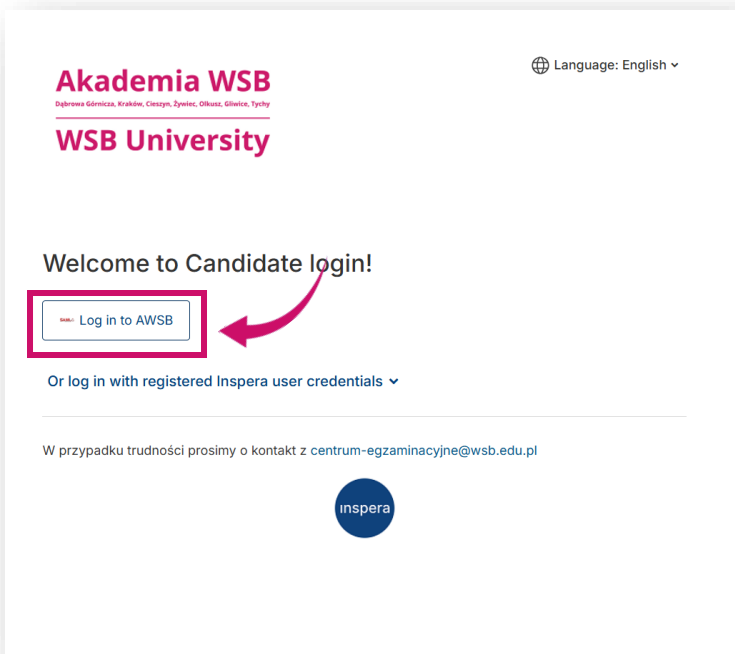
- ❖ System check is an automatic system verification.
- ❖ If there are system check problems, they must be resolved before you can continue.
- ❖ If the verification finished successfully, you can click on **Next** to continue.



Log into the exam



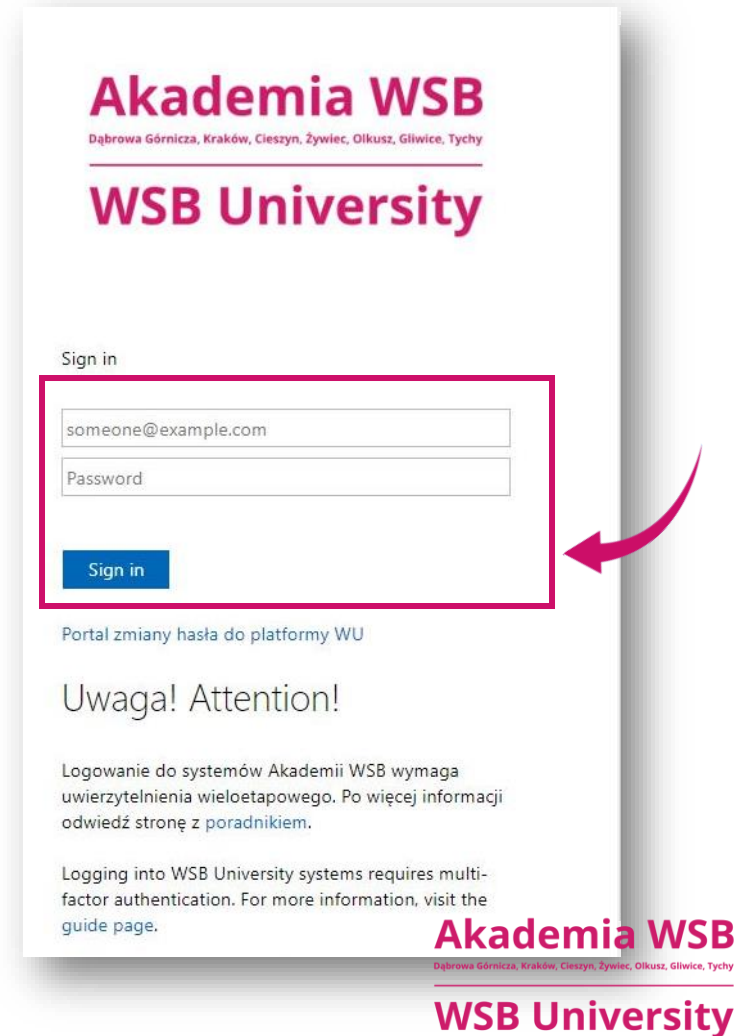
❖ Click on **Authenticate**.



❖ A new window appears. Click on **Log in to AWSB**.

Log into the exam

- ❖ We log in with an **e-mail address in the University domain**, e.g. jan.kowalski@student.wsb.edu.pl and the **SAME PASSWORD** that we use to log in to the Virtual University, MS Teams and the university e-mail box (Outlook).
- ❖ If you have difficulty with your login/password, please contact the **IT Department - (32) 295 93 03**.
- ❖ Click on **Sign in**.



Akademia WSB
Dąbrowa Górnicza, Kraków, Cieszyn, Żywiec, Olkusz, Gliwice, Tychy

WSB University

Sign in

someone@example.com

Password

Sign in

Portal zmiany hasła do platformy WU

Uwaga! Attention!

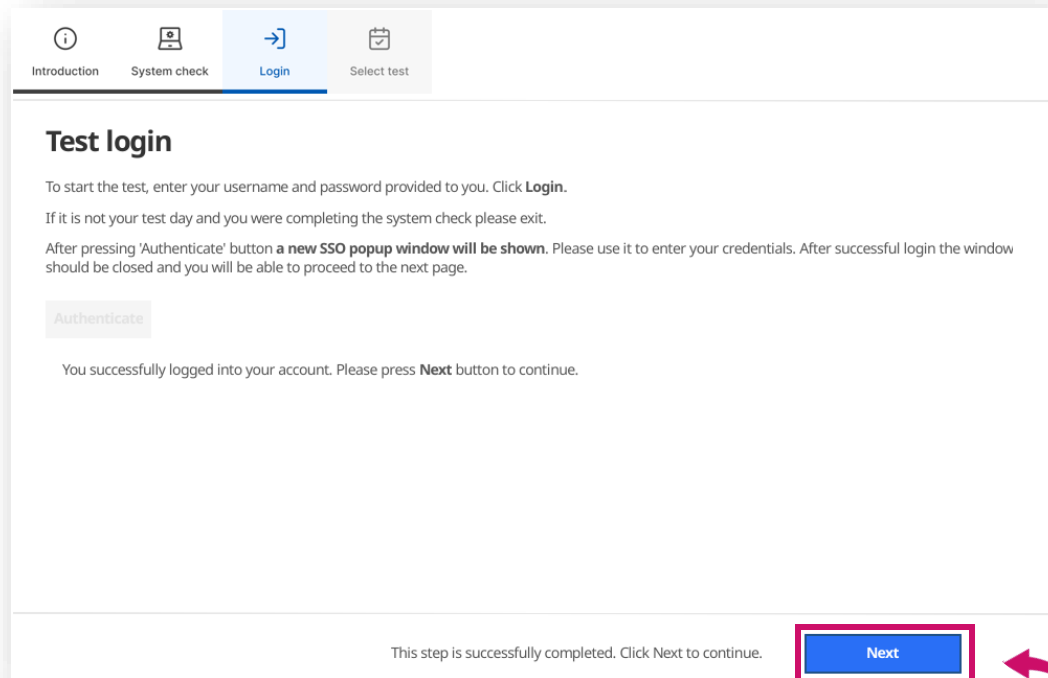
Logowanie do systemów Akademii WSB wymaga uwierzytelnienia wieloetapowego. Po więcej informacji odwiedź stronę z [poradnikiem](#).

Logging into WSB University systems requires multi-factor authentication. For more information, visit the [guide page](#).

Akademia WSB
Dąbrowa Górnicza, Kraków, Cieszyn, Żywiec, Olkusz, Gliwice, Tychy

WSB University

Log into the exam

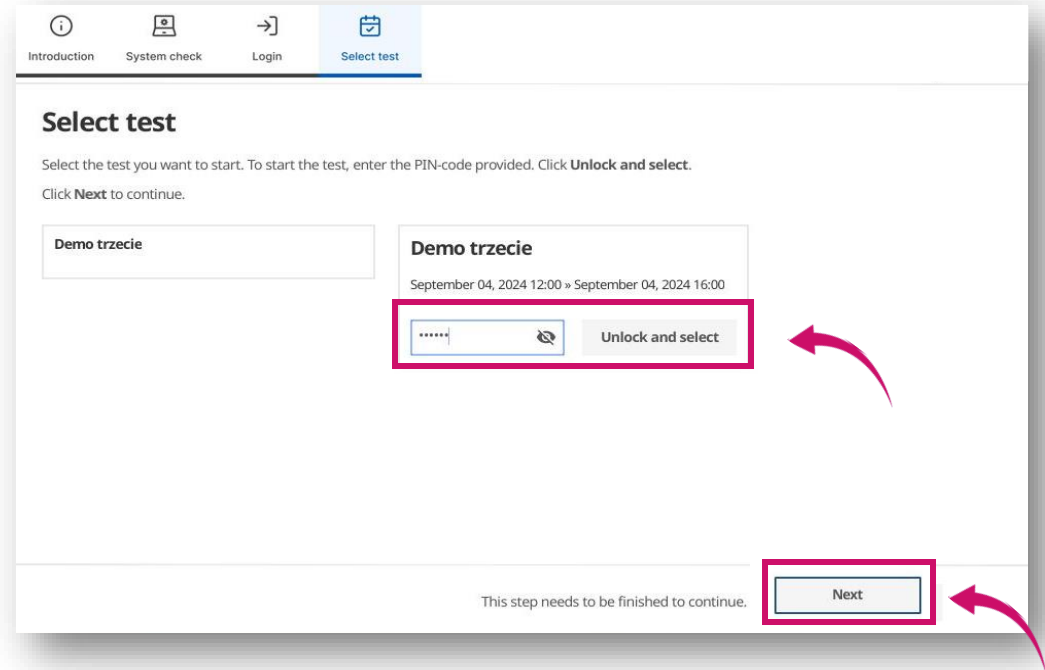


- ❖ If the login and password are accepted, you can continue by clicking on **Next**.

Select test



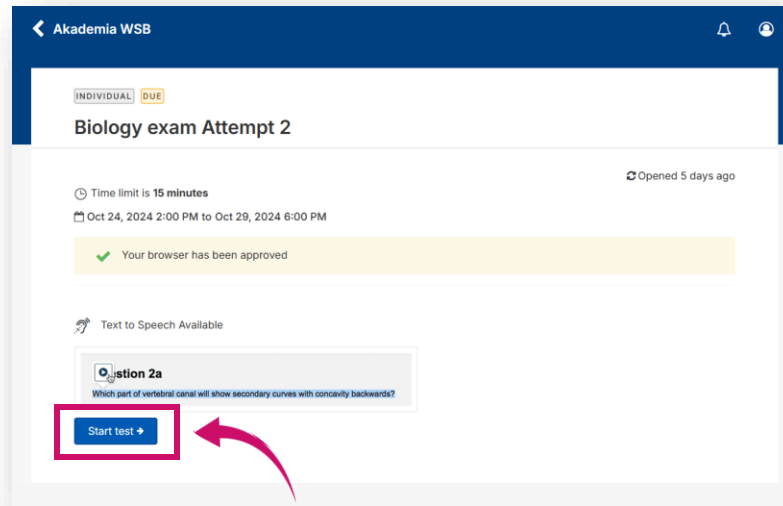
- ❖ If there are no tests scheduled for you, the list on the left side of the screen will be blank.
- ❖ **Select the test** you want to take and **enter the PIN CODE** you received from the Electronic Examination Center.
- ❖ The field to enter the PIN CODE for the exam will appear 30 minutes before the exam starts.
- ❖ Click on **the Unlock and select** button.
- ❖ If the PIN CODE has been accepted, you can now click on **Next**.



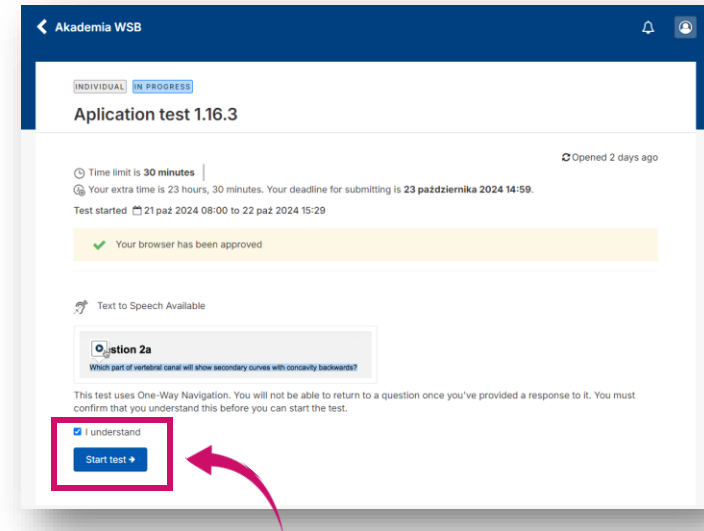
Take the exam



❖ After all previous steps have been completed, the **Start Test** button will appear.



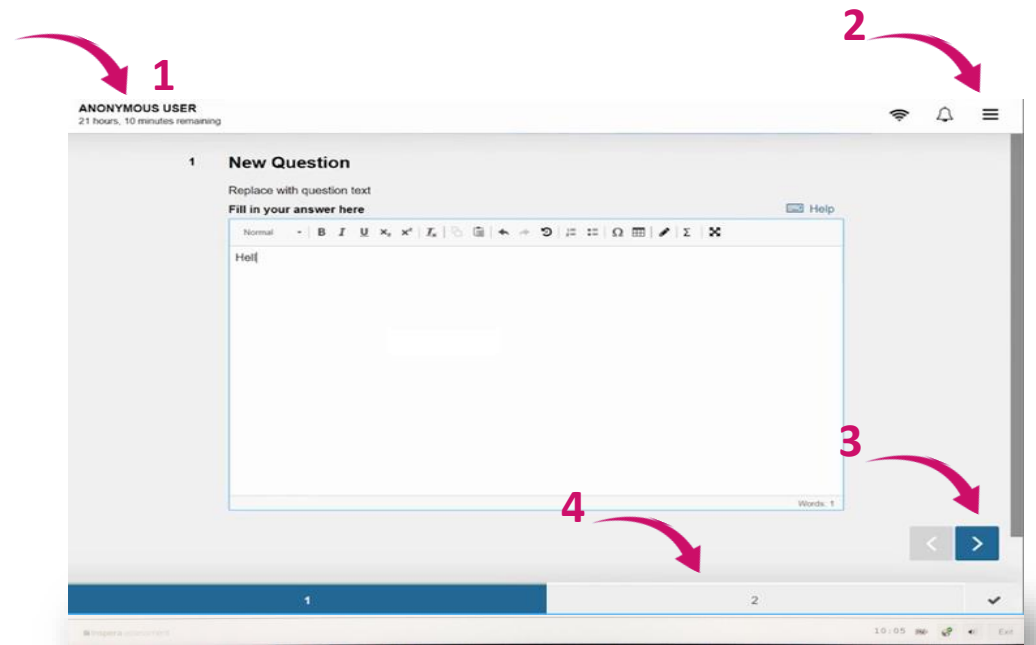
- ❖ View when it will be possible to go back to previous questions in the exam (Teacher's decision).
- ❖ Click on **Start test**.



- ❖ View when one-way navigation is set, so it is not possible to return to previous questions. In this case, you must additionally check the **I understand** checkbox for the test window to open.
- ❖ Click on **Start test**.

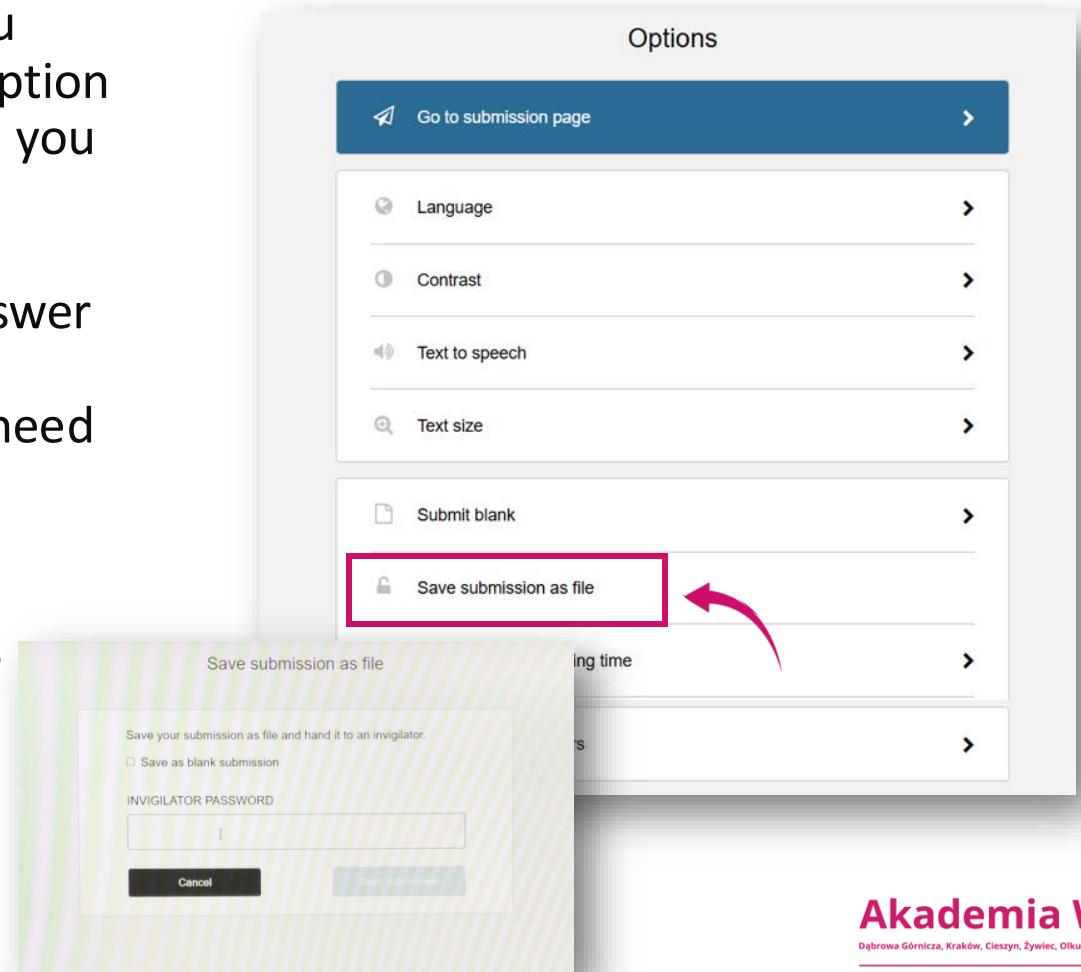
Take the exam

- ❖ You start answering the examination questions.
- ❖ During the exam, in the upper left corner, you can see the **time left** to complete and submit the exam (1).
- ❖ After clicking on the „hamburger” menu icon (2), additional functions are available.
- ❖ If a Teacher (when creating the exam) gives the students the possibility to return to the previous questions, you will be able to navigate between them using the arrows (3) or by clicking on the appropriate question number at the bottom (4).
- ❖ If the Teacher does not allow you to return to the previous questions, you will only see the right arrow (left arrow and the bar with the question numbers will be unavailable).



Take the exam

- ❖ One of the options in the „hamburger” menu is **Save submission as file**. You can use this option only if you lose your internet connection and you are not able to submit your exam paper.
- ❖ The Internet connection is not needed to answer the questions (your answers are saved even without the internet connection) - you only need the internet connection to log into the exam and submit it.
- ❖ The invigilator’s password is required to save the exam as a file. Contact the Electronic Examination Center to receive it.



Take the exam

- ❖ After you have finished answering the exam questions, a summary screen will appear.
- ❖ Click on **Submit Now**.

Ready to submit?
You have 10 unattempted questions.

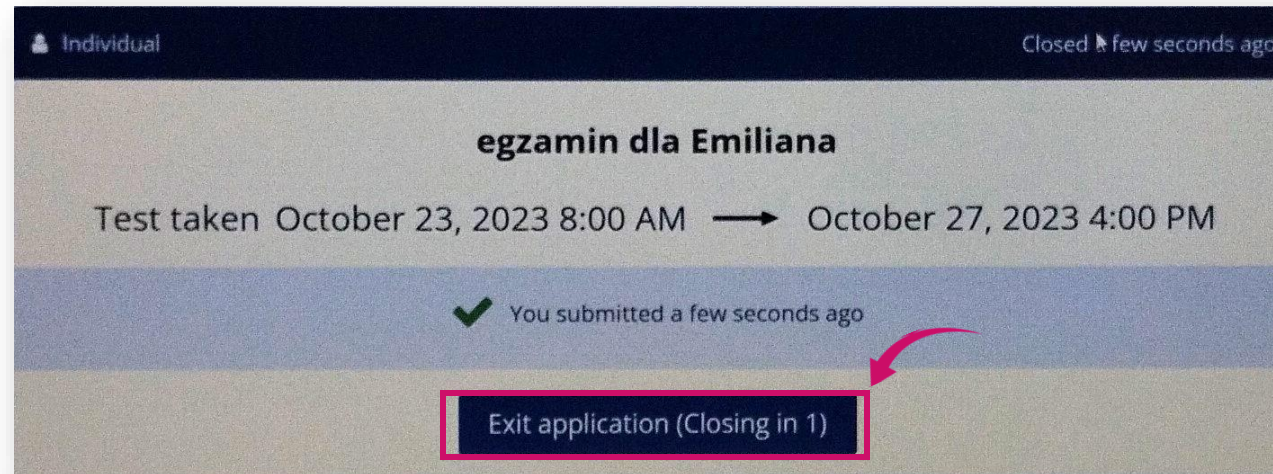
[Submit now](#)

All questions (10) Not attempted (10)

Question	Question type
i	Information or resources
1	Text Entry
2	Inline Choice
3	Essay
4	Numeric Entry
5	Multiple Response
6	Multiple Choice
7	Matching
8	Drag and Drop
9	Hotspot
10	Graphic Gap Match

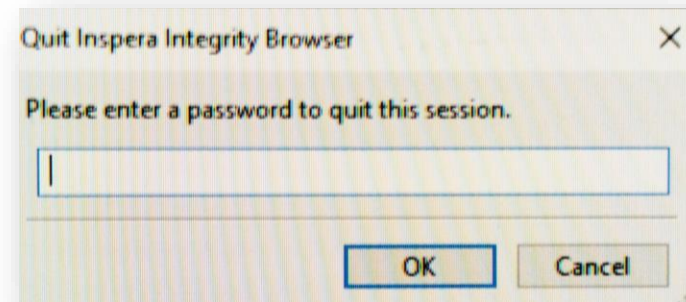
Quit Inspera

- ❖ Next, wait until Inspera Exam Portal **closes itself**.



Quitting the application incorrectly and other technical problems

- ❖ If you have tried to quit the application in a different way than described in the manual, (e.g. by clicking on **EXIT** button, which you are asked not to do), the system will ask you to enter the EXIT password.
- ❖ However, this is not the PIN CODE you know, but the password that is available only to the Electronic Examination Center workers. **Call us immediately to receive the password!**
- ❖ **If you have any technical problems before or during the exam, call us immediately to get support. The contact details are available on the last page.**



Check your exam grade



❖ To check your exam grade, visit the website <https://awsb.inspera.com>

Akademia WSB
Dąbrowa Górnicza, Kraków, Cieszyń, Żywiec, Olkusz, Gliwice, Tychy

WSB University

Language: English ▾

Welcome to Candidate login!

Log in to AWSB

Or log in with registered Inspera user credentials ▾

W przypadku trudności prosimy o kontakt z centrum-egzaminacyjne@wsb.edu.pl

inspera

Check your exam grade

- ❖ Log in with an **e-mail address in the University domain**, e.g. jan.kowalski@student.wsb.edu.pl and the **SAME PASSWORD** that you use to log in to the Virtual University, MS Teams and the university e-mail box (Outlook).
- ❖ Then click on **Zaloguj (Log in)** button.

Akademia WSB
Dąbrowa Górnicza, Kraków, Cieszyń, Żywiec, Olkusz, Gliwice, Tychy

WSB University

Zaloguj

osoba@example.com

Hasło

Zaloguj

[Portal zmiany hasła do platformy WU](#)

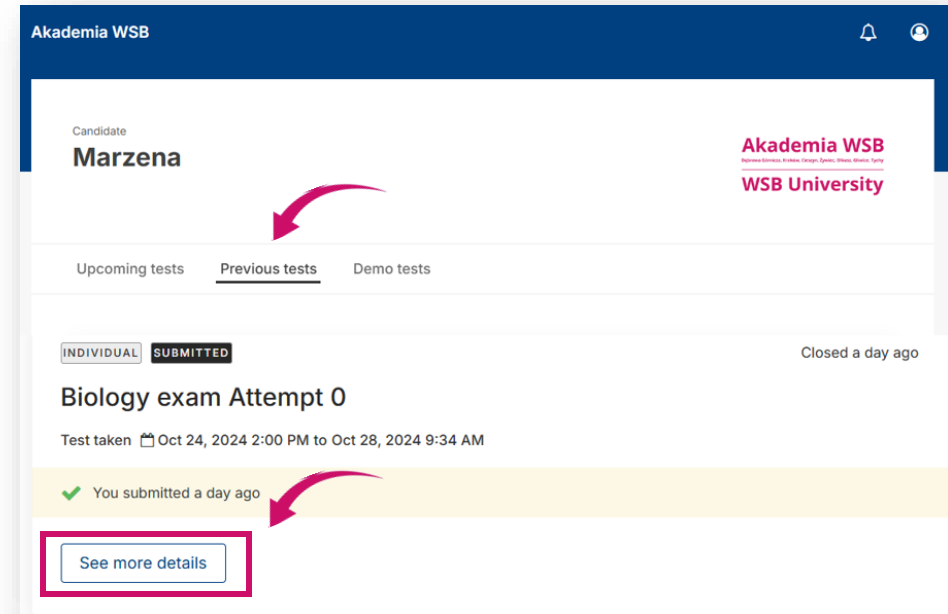
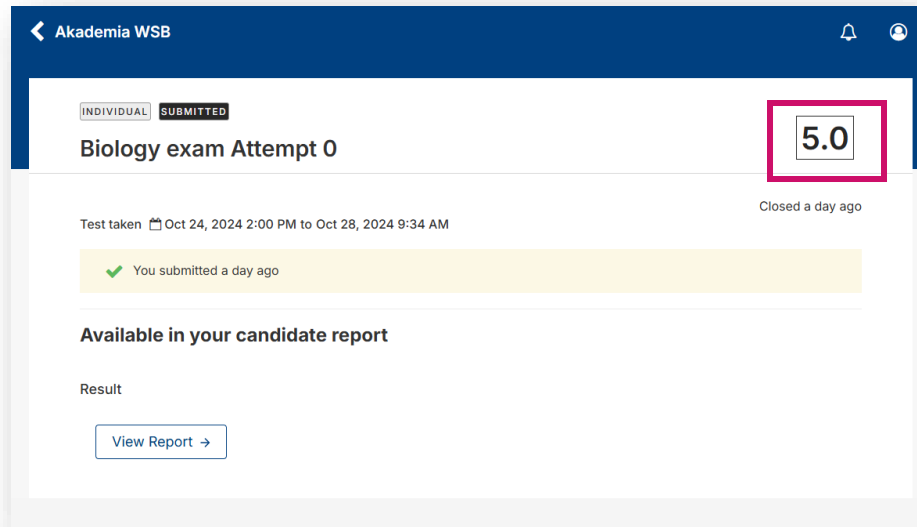
Uwaga! Attention!

Logowanie do systemów Akademii WSB wymaga uwierzytelnienia wieloetapowego. Po więcej informacji odwiedź stronę z [poradnikiem](#).

Logging into WSB University systems requires multi-factor authentication. For more information, visit the [guide page](#).

Check your exam grade

- ❖ Go to the **Previous tests**.
You see the exam you have taken.
- ❖ Find the right exam and click on **See More Details** to check if your exam has been graded.



- ❖ Once the teacher has graded the exam, you will see the grade.

Contact us:

- ❖ email: centrum-egzaminacyjne@wsb.edu.pl
- ❖ phone number: +48 32 111 01 55
- ❖ www website: [Electronic Examination Center](#)

