

Manual for Students



Windows

Minimum System Requirements

Install the Inspera Integrity Browser

Start Inspera Integrity Browser

Log into the exam

Take the exam

Quit the application

Incorrect quitting the application

Check the exam grade

Contact the Electronic Examination Center

Minimum System Requirements



Windows: 10 and 11 on 64-bit platforms

- ❖ **CPUs newer than 2011 [Intel Sandy Bridge (Core i3, i5 i i7) or newer]**
- ❖ **Minimum SSE 4.2 in AMD processors and CPU**
- ❖ **Graphics driver: OpenGL 2.0**
- ❖ **Free storage space: 500 MB**
- ❖ **Internet connection: 0.15 Mb/s upload speed**

Install the Inspera Integrity Browser



- ❖ The first step is to install the *Inspera Integrity Browser* application.
- ❖ To do this, **you need to have the administrator rights** on your computer.

The newest installation link:



Windows - <http://awsb.inspera.com/get-iep>

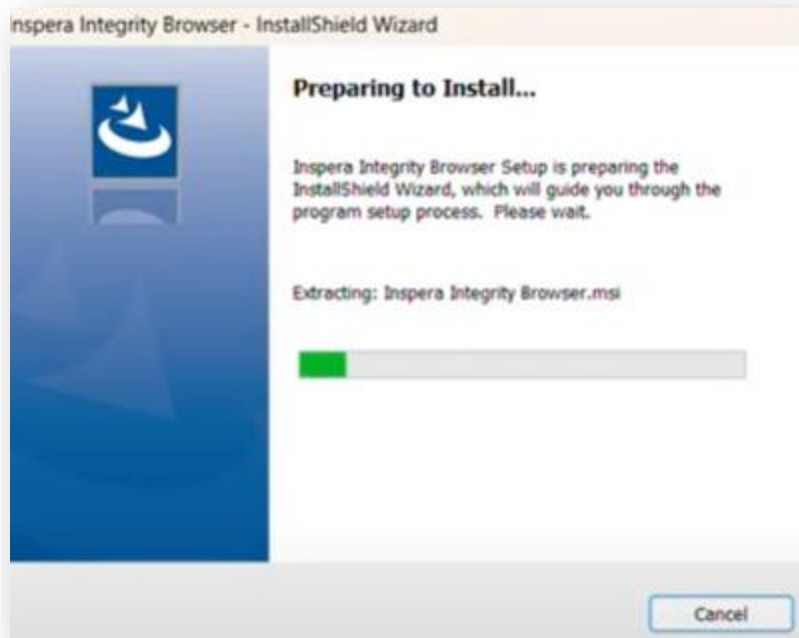
Install the Inspera Integrity Browser



- ❖ The current supported version of the application is **1.16.3**
- ❖ The download of the setup file starts. After the download is finished, **click on the downloaded file.**



Inspera-Exam-Portal-1.16.3-42482470-
default.exe
121 MB •

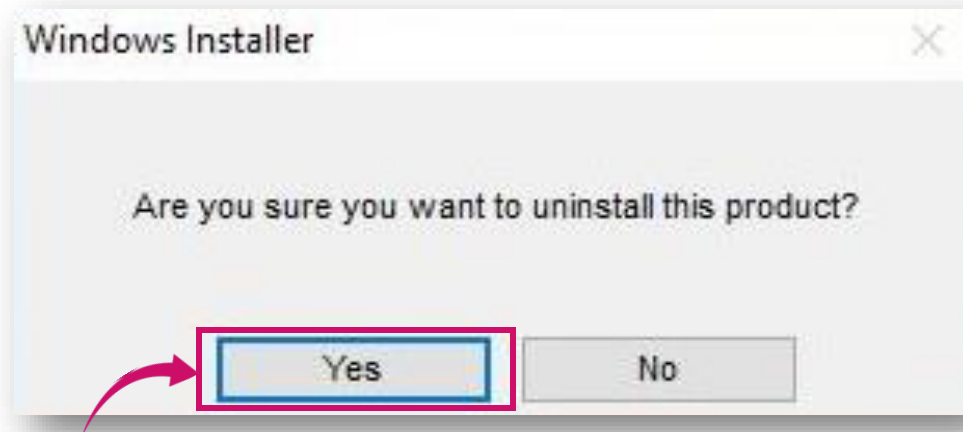
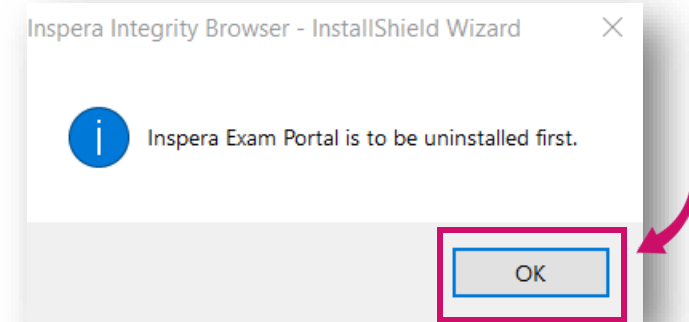


- ❖ Double-clicking will launch the installation wizard.
- ❖ If this is your first time installing the application, please go to slide 9, **skipping slides 6-8.**

Install the Inspera Integrity Browser



- ❖ If you have an older version of the application, the program will inform you about it and automatically uninstall it.
- ❖ Click **OK**.

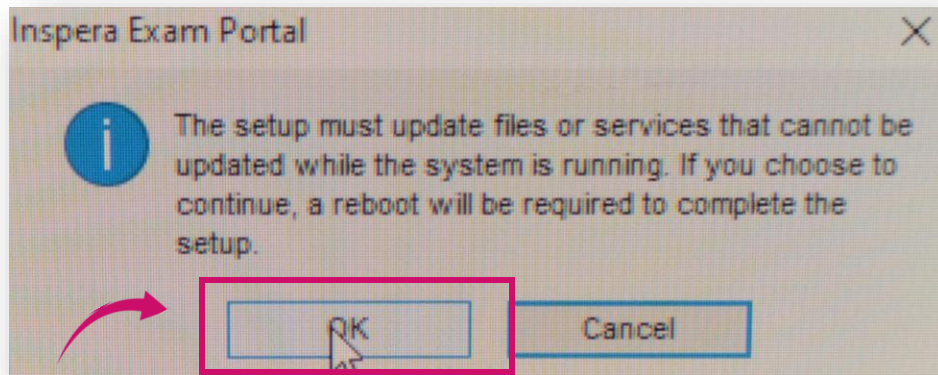
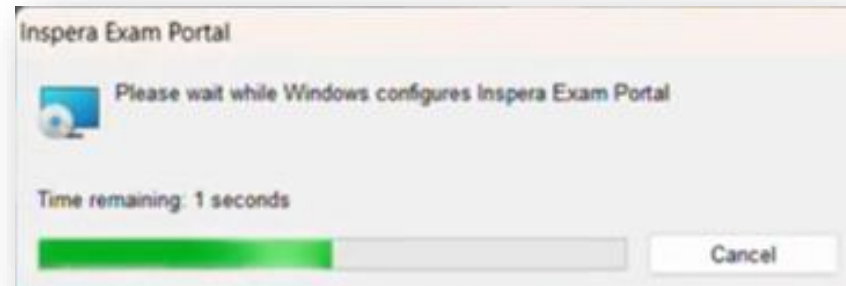


- ❖ The Windows installer will ask for confirmation. Click **YES**.

Install the Inspera Integrity Browser



- ❖ The process of uninstalling the previous version of the application begins.

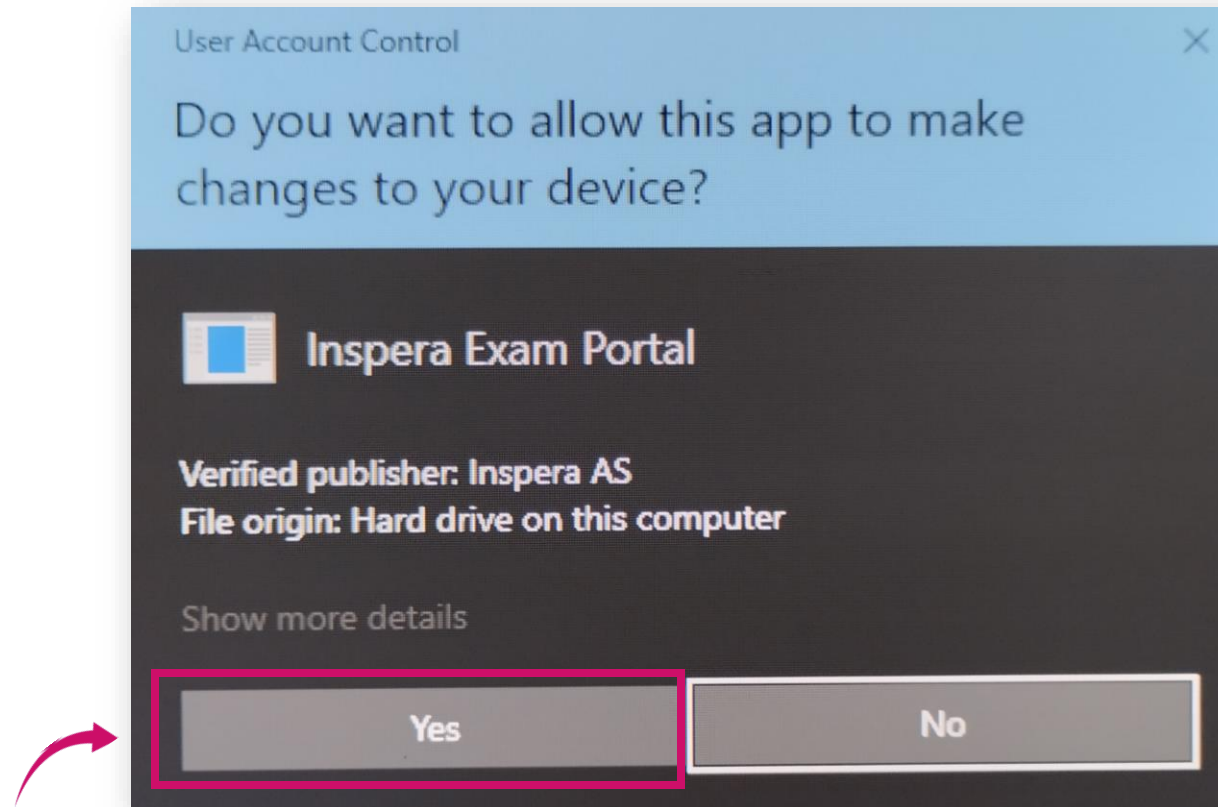


- ❖ Click **OK**.

Install the Inspera Integrity Browser



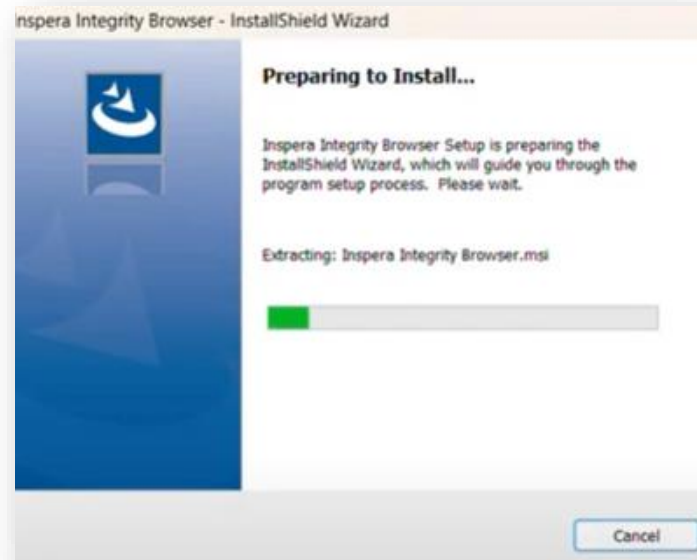
- ❖ In the final step of the ongoing process of uninstalling the previous version of the application, press **Yes** to allow the application to make changes to your computer.



Install the Inspera Integrity Browser



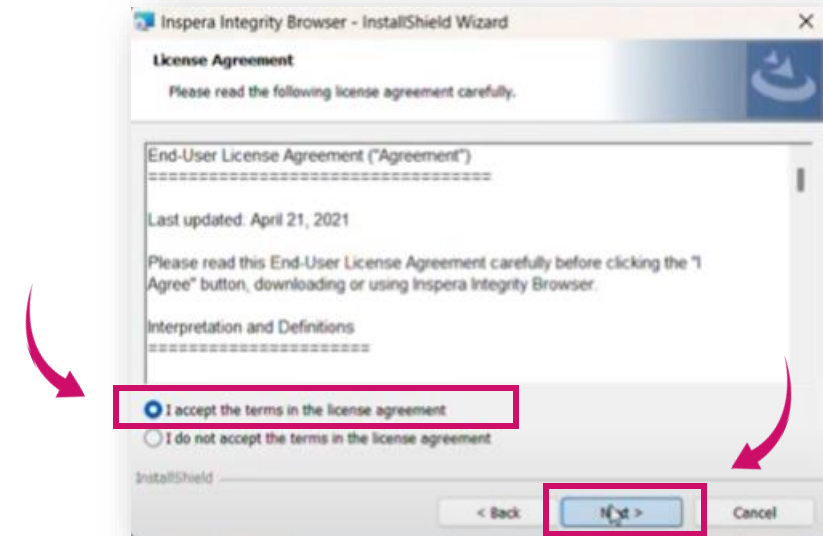
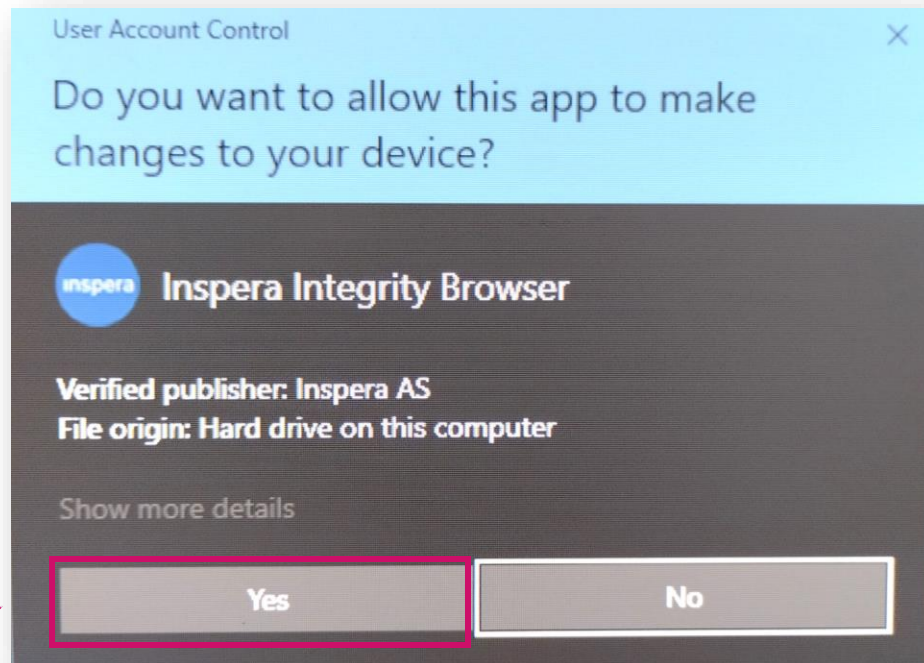
❖ The wizard starts the installation process.



❖ Click **NEXT**.

Install the Inspera Integrity Browser

- ❖ To continue the installation, you must agree to the license terms. To do so, press **I accept the terms in the license agreement**.
- ❖ Then click on **Next**.

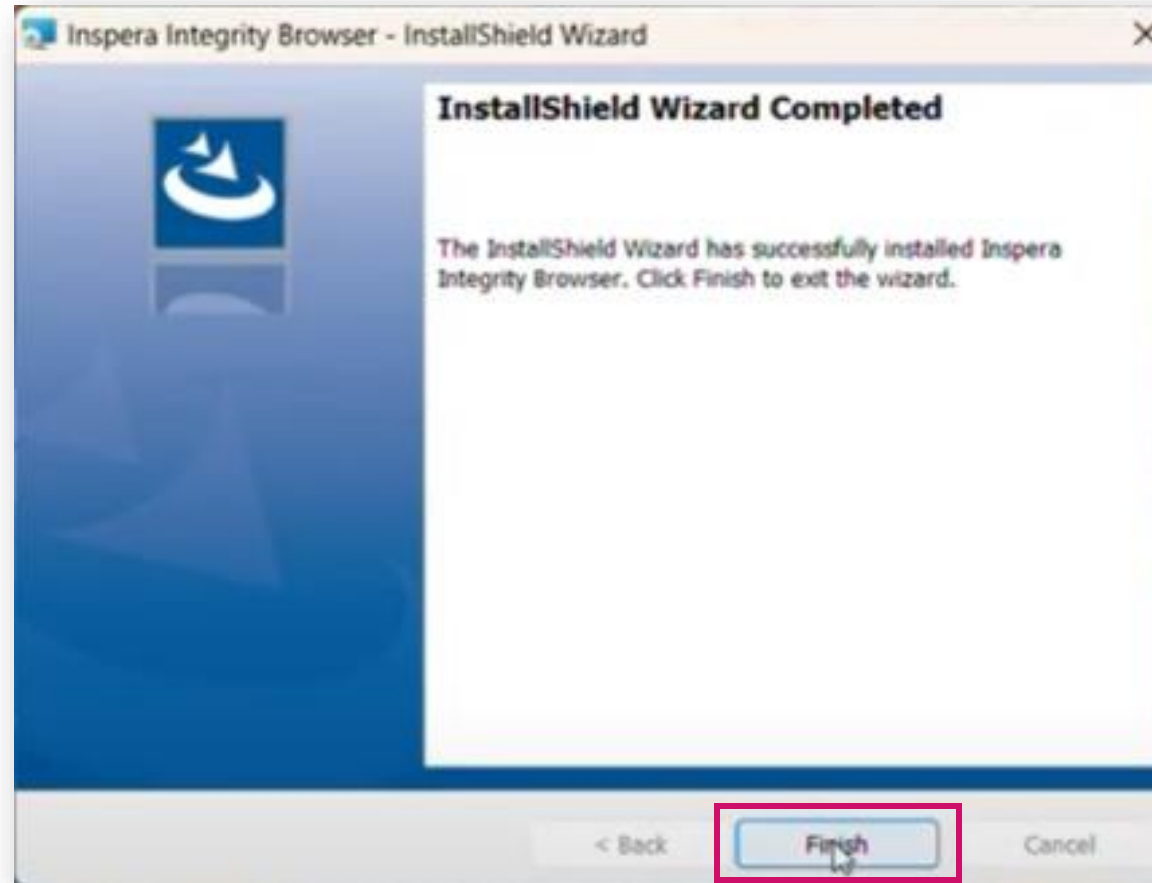


- ❖ Allow the app to make changes to your device by clicking YES.
- ❖ The Inspera Integrity Browser application has been installed on your computer.

Install the Inspera Integrity Browser



❖ Click on **Finish**.



Start the Inspera Integrity Browser



- ❖ After installing **Inspera Integrity Browser**, click on the created icon on your computer's desktop and launch the application.

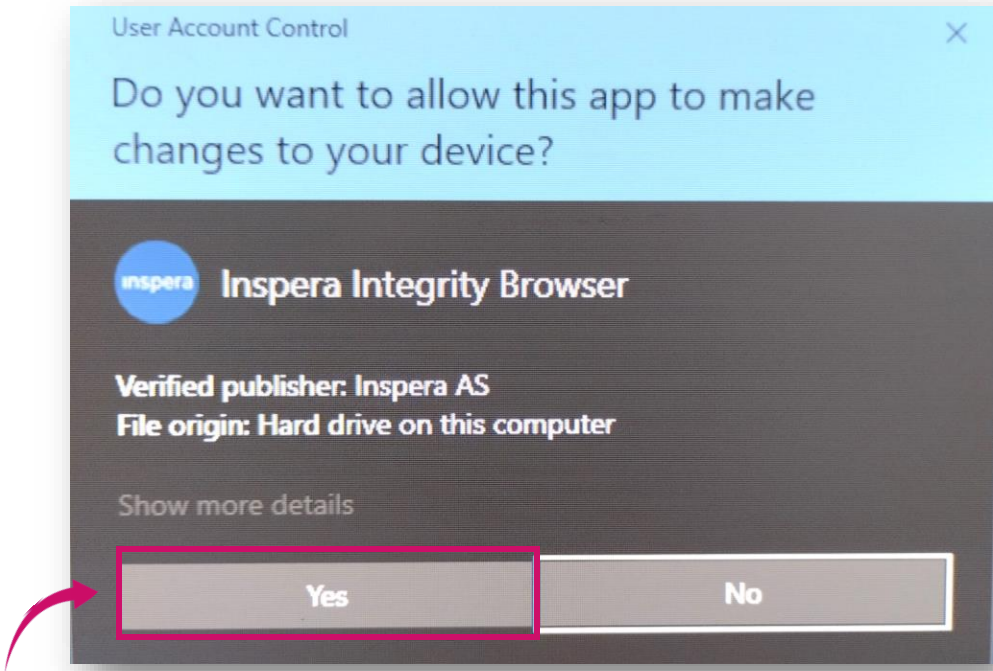


Inspera Integrity
Browser

Start the Inspera Integrity Browser



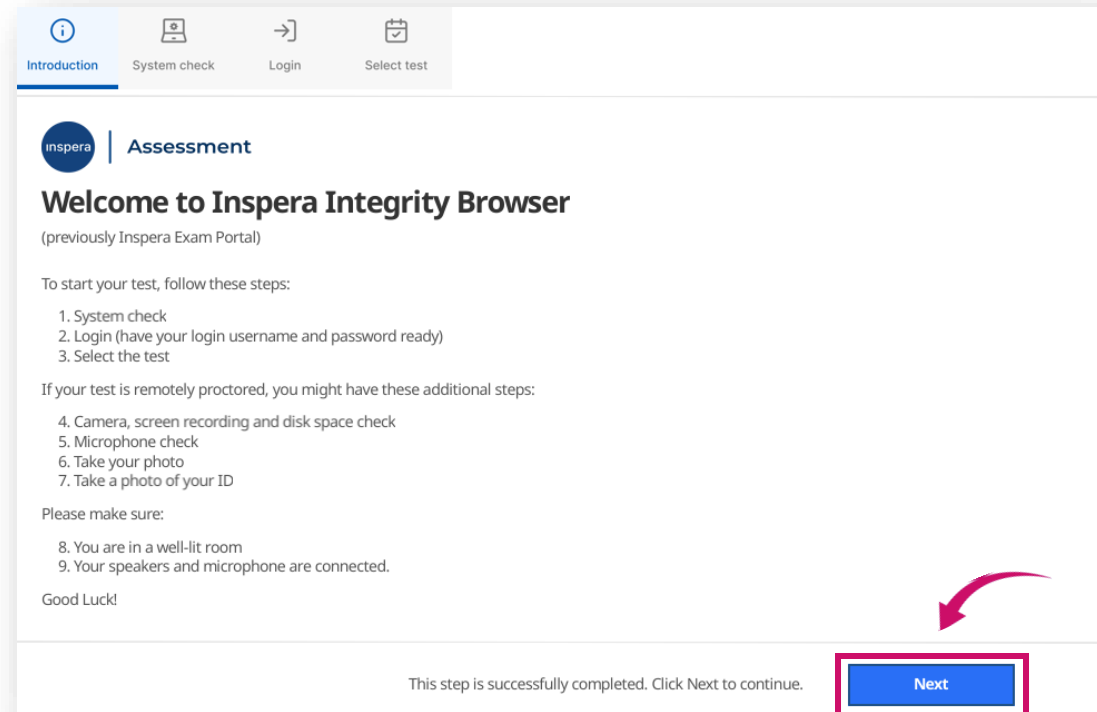
- ❖ Allow the app to make changes to your device by clicking YES.



Welcome screen



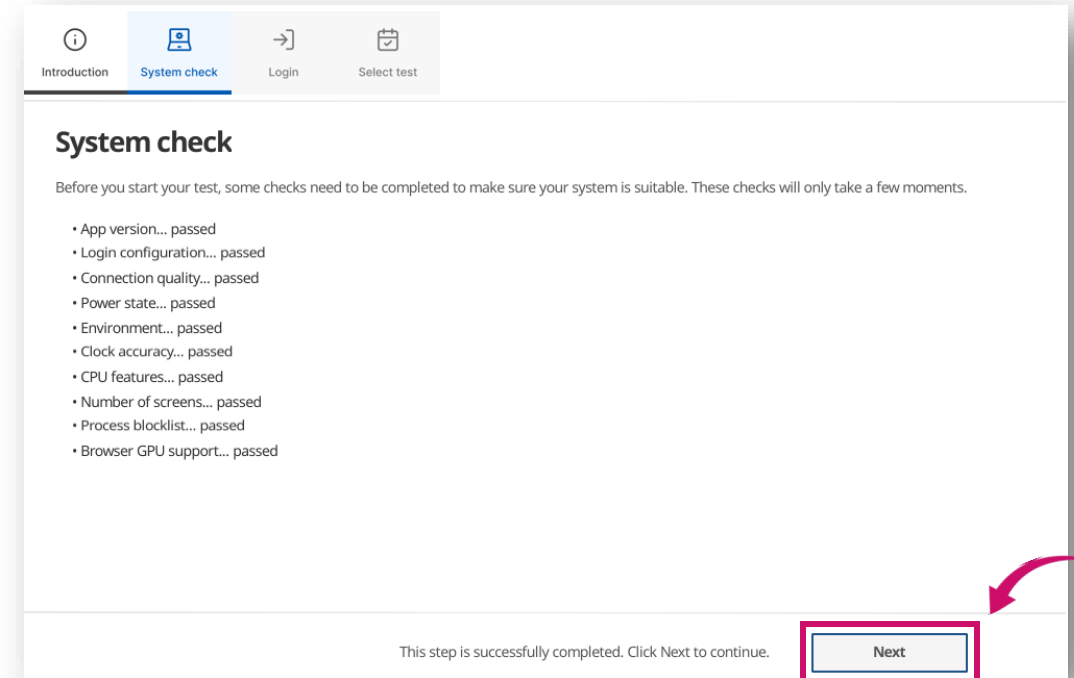
- ❖ In the next window you can see a welcome screen which informs you that the initial system tests should be performed.
- ❖ Click on **Next**.



System check

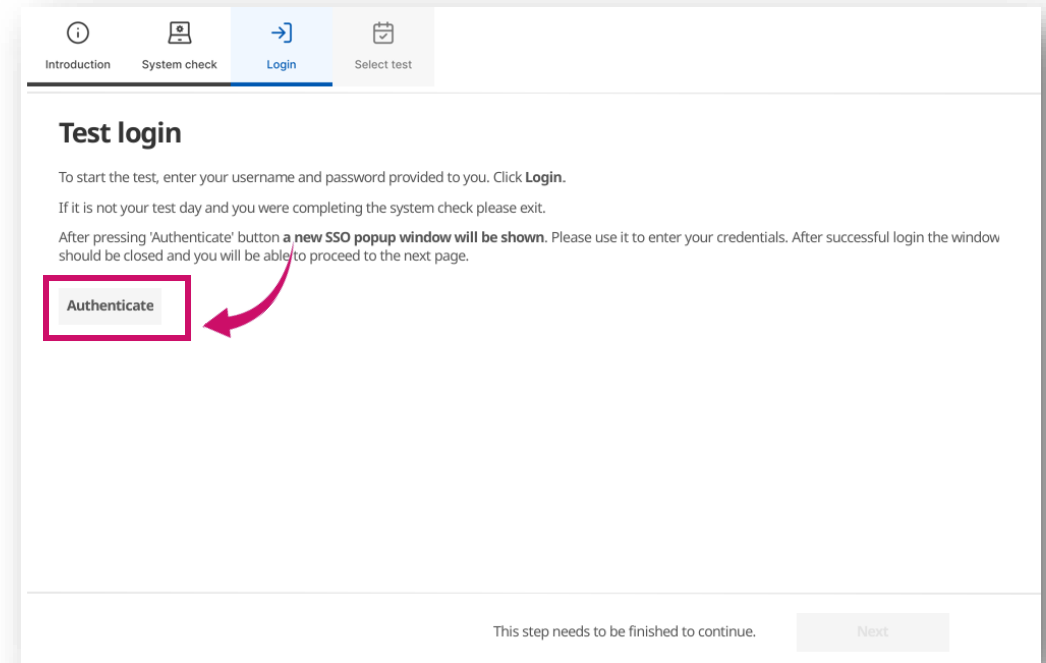
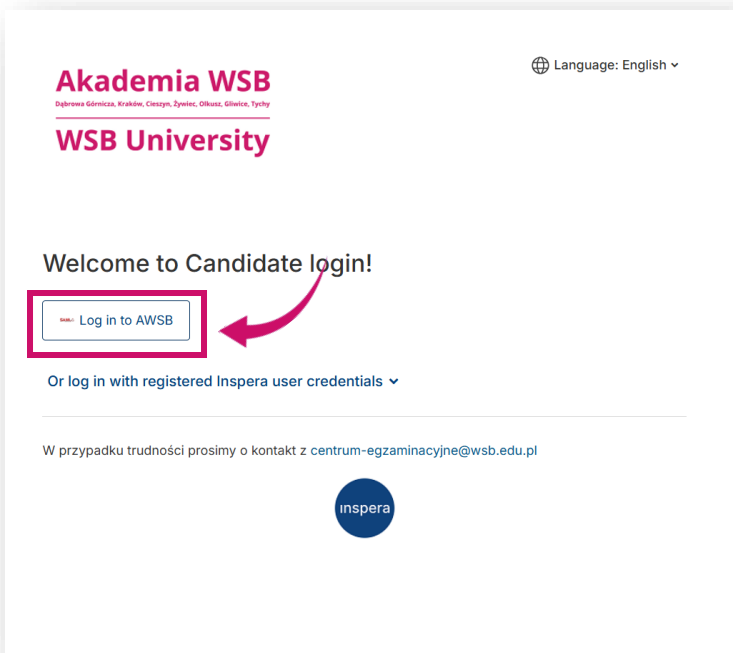


- ❖ System check is an automatic system verification.
- ❖ If there are system check problems, they must be resolved before you can continue.
- ❖ If the verification finished successfully, you can click on **Next** to continue.



Log into the exam

❖ Click on **Authenticate**.



❖ A new window appears. Click on **Log in to AWSB**.

Log into the exam

- ❖ We log in with an **e-mail address in the University domain**, e.g. jan.kowalski@student.wsb.edu.pl and the **SAME PASSWORD** that we use to log in to the Virtual University, MS Teams and the university e-mail box (Outlook).
- ❖ If you have difficulty with your login/password, please contact the **IT Department - (32) 295 93 03**.
- ❖ Click on **Sign in**.

Akademia WSB
Dąbrowa Górnicza, Kraków, Cieszyn, Żywiec, Olkusz, Gliwice, Tychy

WSB University

Sign in

someone@example.com

Password

Sign in

Portal zmiany hasła do platformy WU

Uwaga! Attention!

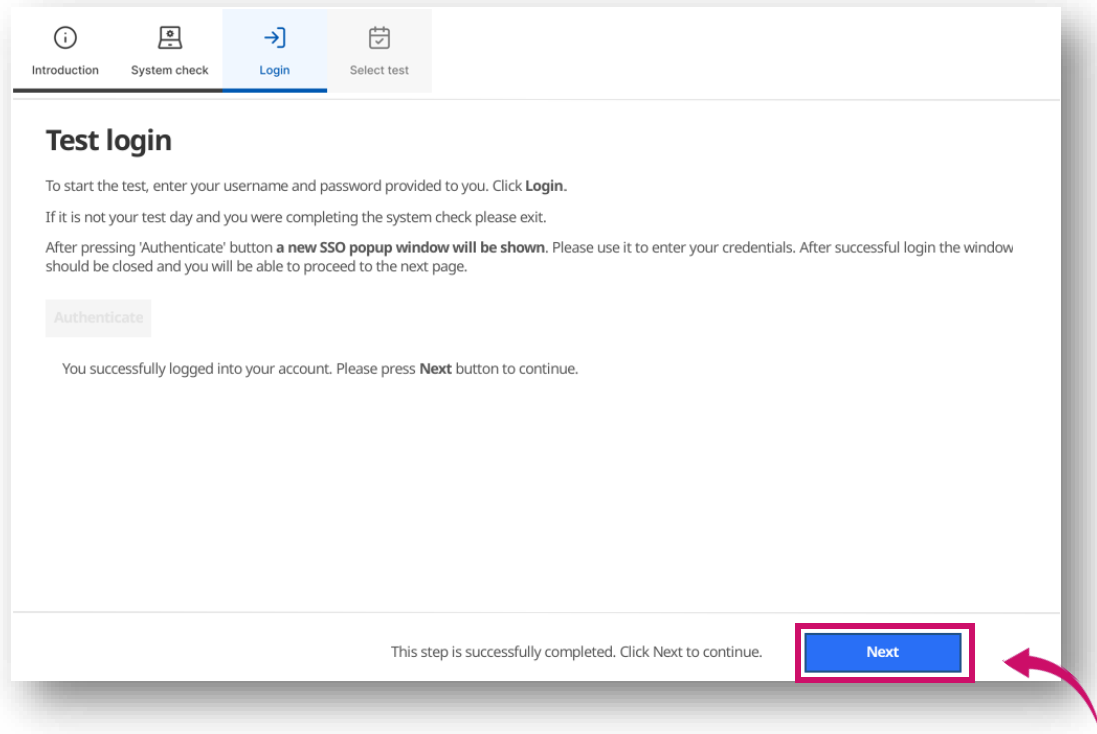
Logowanie do systemów Akademii WSB wymaga uwierzytelnienia wieloetapowego. Po więcej informacji odwiedź stronę z [poradnikiem](#).

Logging into WSB University systems requires multi-factor authentication. For more information, visit the [guide page](#).

Akademia WSB
Dąbrowa Górnicza, Kraków, Cieszyn, Żywiec, Olkusz, Gliwice, Tychy

WSB University

Log into the exam

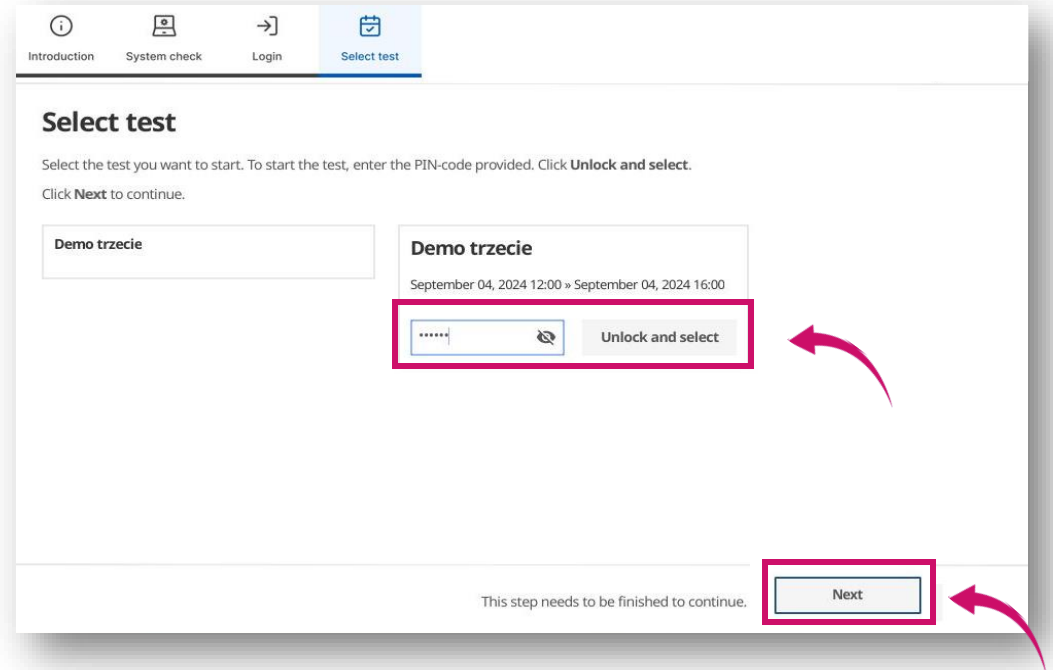


- ❖ If the login and password are accepted, you can continue by clicking on **Next**.

Select test



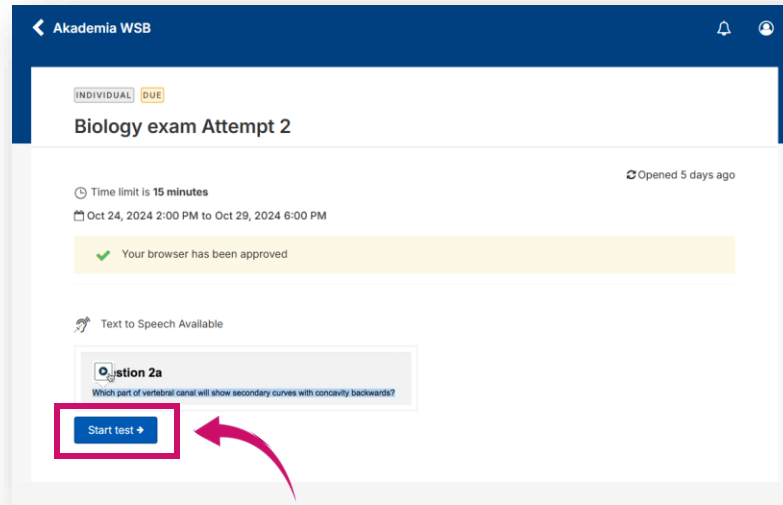
- ❖ If there are no tests scheduled for you, the list on the left side of the screen will be blank.
- ❖ **Select the test** you want to take and **enter the PIN CODE** you received from the Electronic Examination Center.
- ❖ The field to enter the PIN CODE for the exam will appear 30 minutes before the exam starts.
- ❖ Click on **the Unlock and select** button.
- ❖ If the PIN CODE has been accepted, you can now click on **Next**.



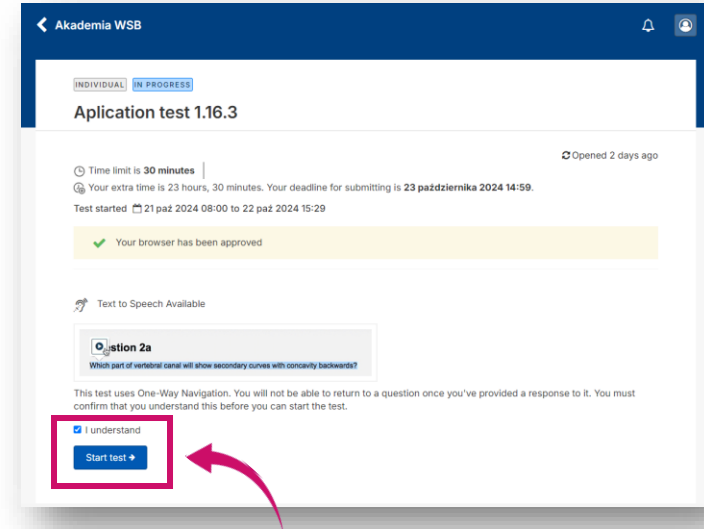
Take the exam



❖ After all previous steps have been completed, the **Start Test** button will appear.



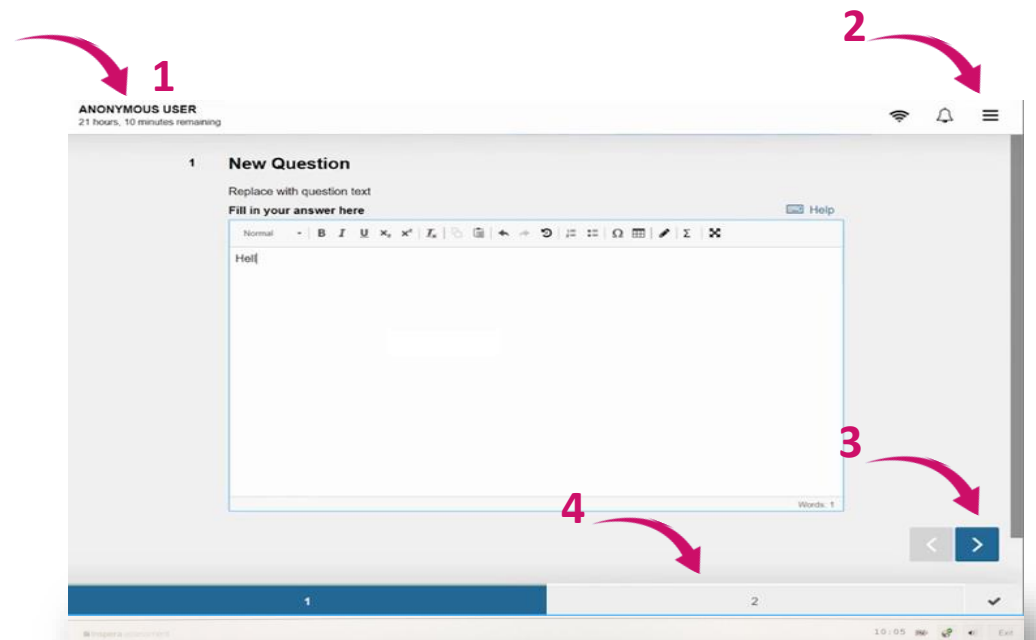
- ❖ View when it will be possible to go back to previous questions in the exam (Teacher's decision).
- ❖ Click on **Start test**.



- ❖ View when one-way navigation is set, so it is not possible to return to previous questions. In this case, you must additionally check the **I understand** checkbox for the test window to open.
- ❖ Click on **Start test**.

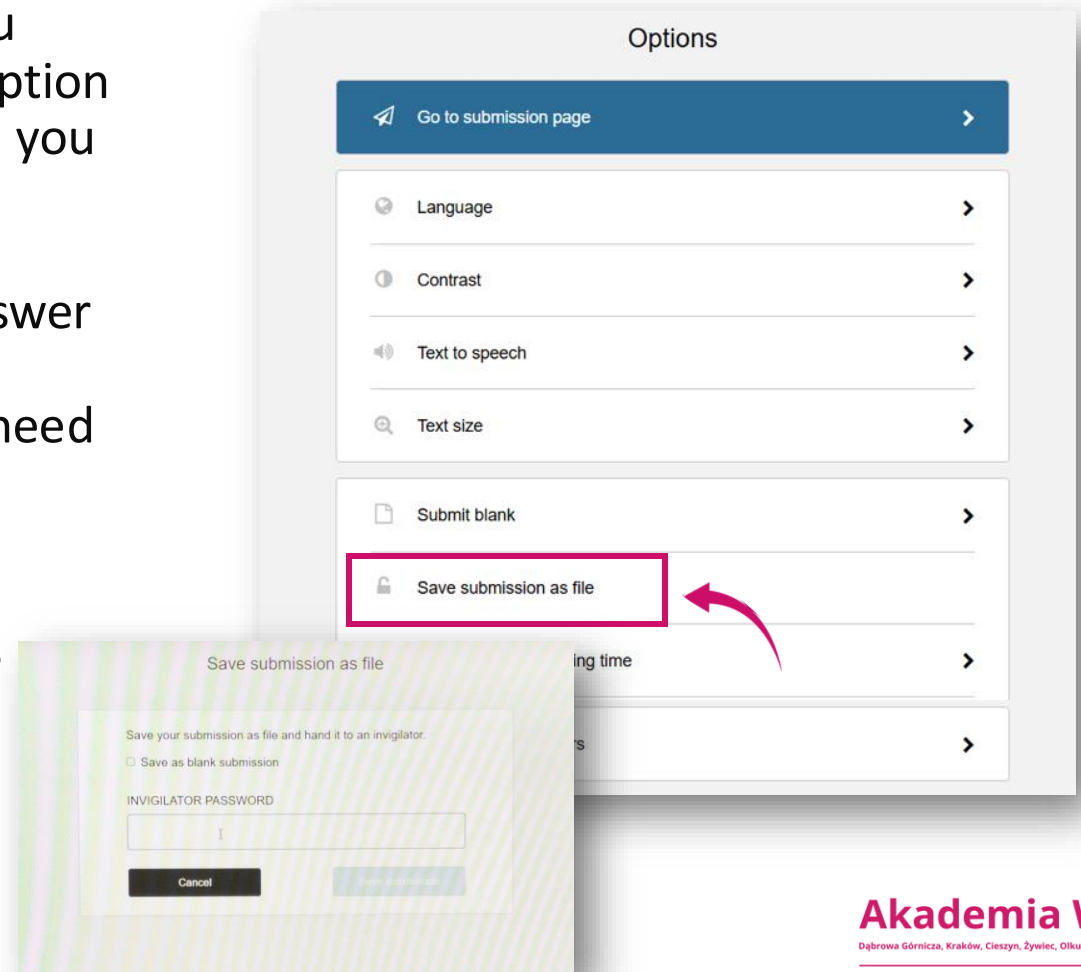
Take the exam

- ❖ You start answering the examination questions.
- ❖ During the exam, in the upper left corner, you can see the **time left** to complete and submit the exam (1).
- ❖ After clicking on the „hamburger” menu icon (2), additional functions are available.
- ❖ If a Teacher (when creating the exam) gives the students the possibility to return to the previous questions, you will be able to navigate between them using the arrows (3) or by clicking on the appropriate question number at the bottom (4).
- ❖ If the Teacher does not allow you to return to the previous questions, you will only see the right arrow (left arrow and the bar with the question numbers will be unavailable).



Take the exam

- ❖ One of the options in the „hamburger” menu is **Save submission as file**. You can use this option only if you lose your internet connection and you are not able to submit your exam paper.
- ❖ The Internet connection is not needed to answer the questions (your answers are saved even without the internet connection) - you only need the internet connection to log into the exam and submit it.
- ❖ The invigilator’s password is required to save the exam as a file. Contact the Electronic Examination Center to receive it.



Take the exam

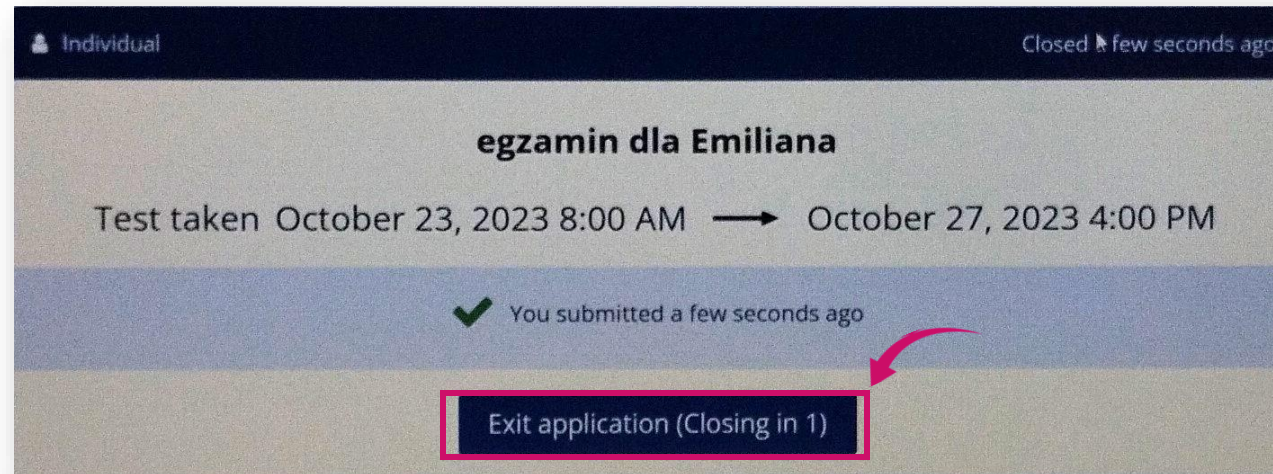


- ❖ After you have finished answering the exam questions, a summary screen will appear.
- ❖ Click on **Submit Now**.

Question	Question type
i	Information or resources
1	Text Entry
2	Inline Choice
3	Essay
4	Numeric Entry
5	Multiple Response
6	Multiple Choice
7	Matching
8	Drag and Drop
9	Hotspot
10	Graphic Gap Match

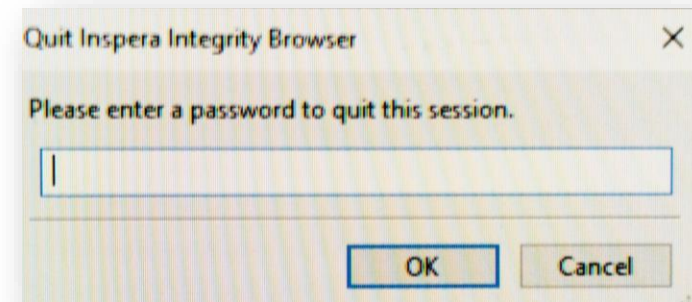
Quit Inspera

- ❖ Next, wait until Inspera Exam Portal **closes itself**.



Quitting the application incorrectly and other technical problems

- ❖ If you have tried to quit the application in a different way than described in the manual, (e.g. by clicking on **EXIT** button, which you are asked not to do), the system will ask you to enter the EXIT password.
- ❖ However, this is not the PIN CODE you know, but the password that is available only to the Electronic Examination Center workers. **Call us immediately to receive the password!**
- ❖ **If you have any technical problems before or during the exam, call us immediately to get support. The contact details are available on the last page.**



Check your exam grade



❖ To check your exam grade, visit the website <https://awsb.inspera.com>

Akademia WSB
Dąbrowa Górnicza, Kraków, Cieszyń, Żywiec, Olkusz, Gliwice, Tychy

WSB University

Language: English ▾

Welcome to Candidate login!

Log in to AWSB

Or log in with registered Inspera user credentials ▾

W przypadku trudności prosimy o kontakt z centrum-egzaminacyjne@wsb.edu.pl

inspera

Check your exam grade

- ❖ Log in with an **e-mail address in the University domain**, e.g. jan.kowalski@student.wsb.edu.pl and the **SAME PASSWORD** that you use to log in to the Virtual University, MS Teams and the university e-mail box (Outlook).
- ❖ Then click on **Zaloguj (Log in)** button.

Akademia WSB
Dąbrowa Górnicza, Kraków, Cieszyń, Żywiec, Olkusz, Gliwice, Tychy

WSB University

Zaloguj

osoba@example.com

Hasło

Zaloguj

[Portal zmiany hasła do platformy WU](#)

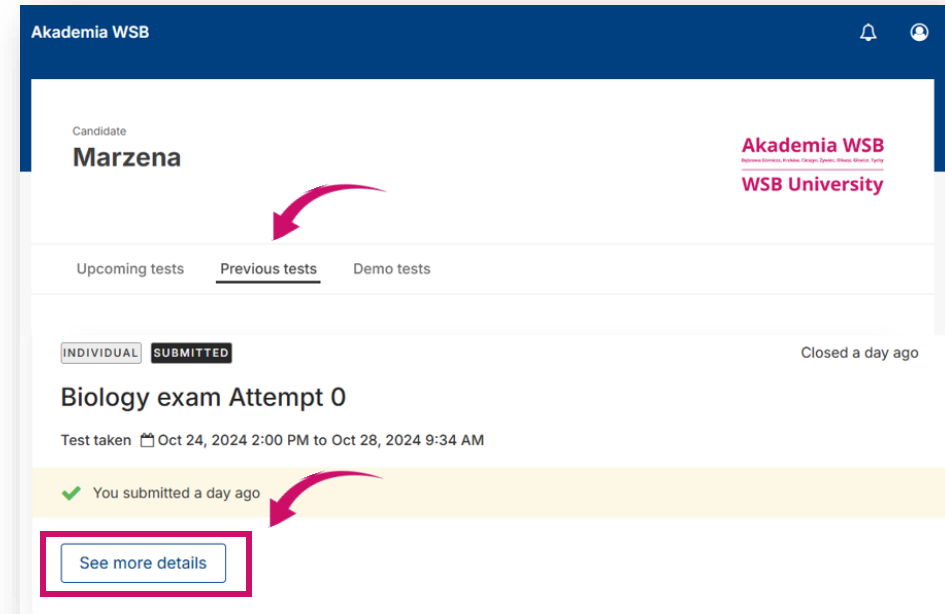
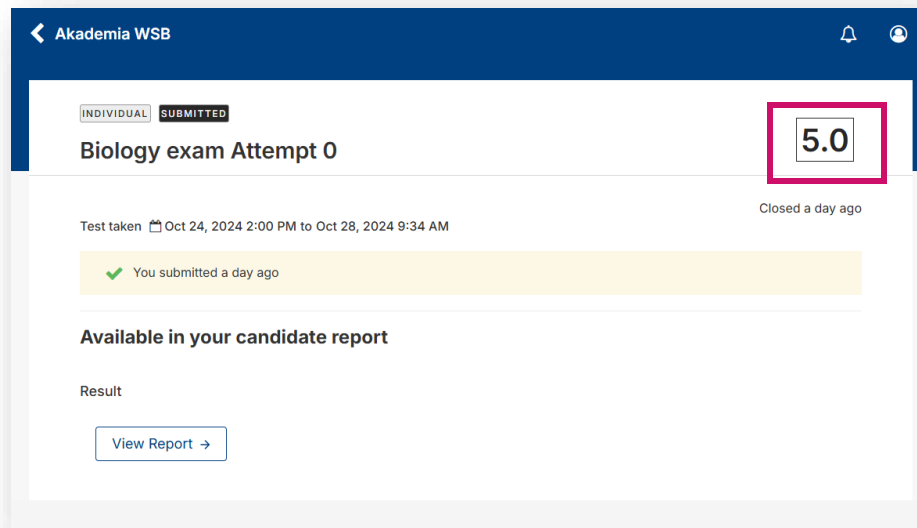
Uwaga! Attention!

Logowanie do systemów Akademii WSB wymaga uwierzytelnienia wieloetapowego. Po więcej informacji odwiedź stronę z [poradnikiem](#).

Logging into WSB University systems requires multi-factor authentication. For more information, visit the [guide page](#).

Check your exam grade

- ❖ Go to the **Previous tests**.
You see the exam you have taken.
- ❖ Find the right exam and click on **See More Details** to check if your exam has been graded.



- ❖ Once the teacher has graded the exam, you will see the grade.

Contact us:

- ❖ email: centrum-egzaminacyjne@wsb.edu.pl
- ❖ phone number: +48 32 111 01 55
- ❖ www website: [Electronic Examination Center](#)

